

2018 KS4 School Dashboard

for governors & school leaders

Produce custom dashboards
at fftaspire.org

Bedale High School

LA North Yorkshire DFE 8154052 Produced November 2018 Version 1

What it is

Seven easy-to-use reports that help governors and school leaders to evaluate school performance using the latest 2018 DFE school performance indicators.

What it tells you

- What are the strengths and areas for improvement in your school?
- How does attainment and pupil progress compare to the national average over the last three years?
- How are you performing in different subjects?
- Do you have any under-performing groups of pupils?
- How might the context of your school affect performance?
- How does pupil attendance compare to the national average?

Important information for analysing 2018 results

Reformed GCSEs (based on a 9-1 grade scale) are included from 2017 onwards where applicable. Grade 5 represents a 'strong' pass; grade 4 a 'standard' pass.

To provide trends over time and context for the 2017 and 2018 results, FFT converts pupil results from previous years to the new 9-1 grades. The blue dotted line on trend charts highlights the change.

About the data shown

1 2 3

Actual results

Actual results for your school, using a range of measures such as averages and thresholds.



Gauges

These display headline indicators and whether actual results and pupils' progress are in line with, or significantly above or below, the national average.

ESTIMATED

← → 1 2 3

Pupil progress

The value added progress that your pupils have made from one key stage to the next. FFT compares your actual results to the estimated results based on the progress of similar pupils nationally.



Statistical significance

Green plus signs and red minus signs highlight where either actual results or pupils' progress is significantly above or below the national average.



Trends

The dashboard analyses school performance over 3-5 years. Any significant year-on-year improvement is highlighted using an up arrow. Significant declines in performance are highlighted with a down arrow.



Strengths & weaknesses

These highlight key pupil groups and subjects where progress is above or below the national average.

Working in partnership with



Data sources

Generated from FFT Aspire which includes data sourced from the DfE (National Pupil Database) and data calculated by FFT. FFT is accredited as a DfE supplier to receive early access to ASP data. Headline performance indicators will be consistent with the DfE School Performance Tables and ASP.

Overview

KS4 Attainment 2018 · Actual results

107 pupils

Attainment 8 (Overall)

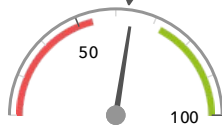
4.6



In line with the national average (4.5) ◀

% English & Maths (Grade 4+)

64%



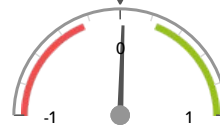
In line with the national average (63%) ◀

KS4 Progress 2018 · Value Added

105 matched pupils

Progress 8 (Overall)

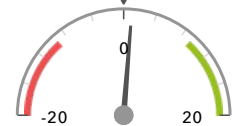
+0.02



In line with the national average (0) ◀

% English & Maths (Grade 4+)

+1%



In line with the national average (0%) ◀

KS4 higher and lower performing pupil groups 2018

	Higher performing	Lower performing
Overall achievement pupil progress	Female (57) ⬆️ ⬆️ Spring Term (33) Middle attainers (41)	FSM (in last 6 years) (14) FSM (ever) (15) Male (48) ⬆️
English pupil progress	Female (57) ⬆️ ⬆️ Spring Term (33) Middle attainers (41)	Male (48) ⬆️ FSM (in last 6 years) (14) FSM (ever) (15)
Mathematics pupil progress	Middle attainers (41) Lower attainers (19) Female (57)	FSM (ever) (15) FSM (in last 6 years) (14) Higher attainers (45) ⬆️ ⬇️
Subjects pupil progress	French GCSE (22) ⬆️ Geography GCSE (57) ⬆️ ⬆️ Art & Design GCSE (15) ⬆️ ⬆️ Physics GCSE (19) ⬆️ D&T Food Technology GCSE (14)	D&T Textiles Technology GCSE (16) English Literature GCSE (103) ⬆️ D&T Resistant Materials GCSE (18) History GCSE (58) Science Double Awd GCSE (86)

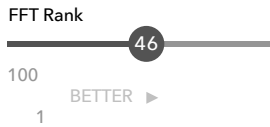
Attainment & progress

KS4 Attainment 2018

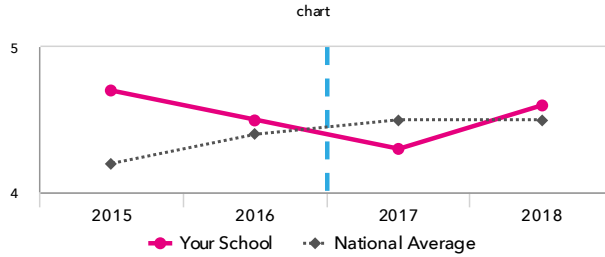
107 pupils

Attainment 8 (Overall)

4.6



In line with the national average (4.5)

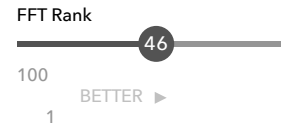


KS4 Progress 2018

105 matched pupils

Progress 8 (Overall)

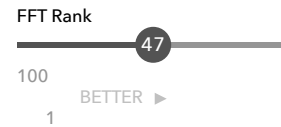
+0.02



In line with the national average (0)

% English & Maths (Grade 4+)

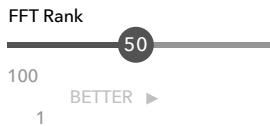
+1%



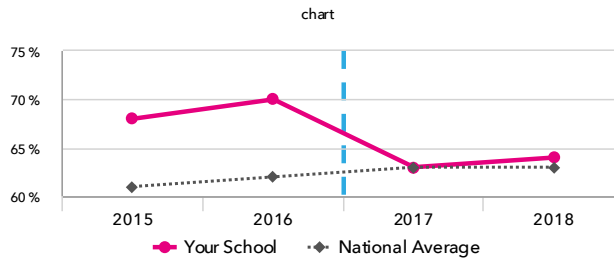
In line with the national average (0%)

% English & Maths (Grade 4+)

64%



In line with the national average (63%)



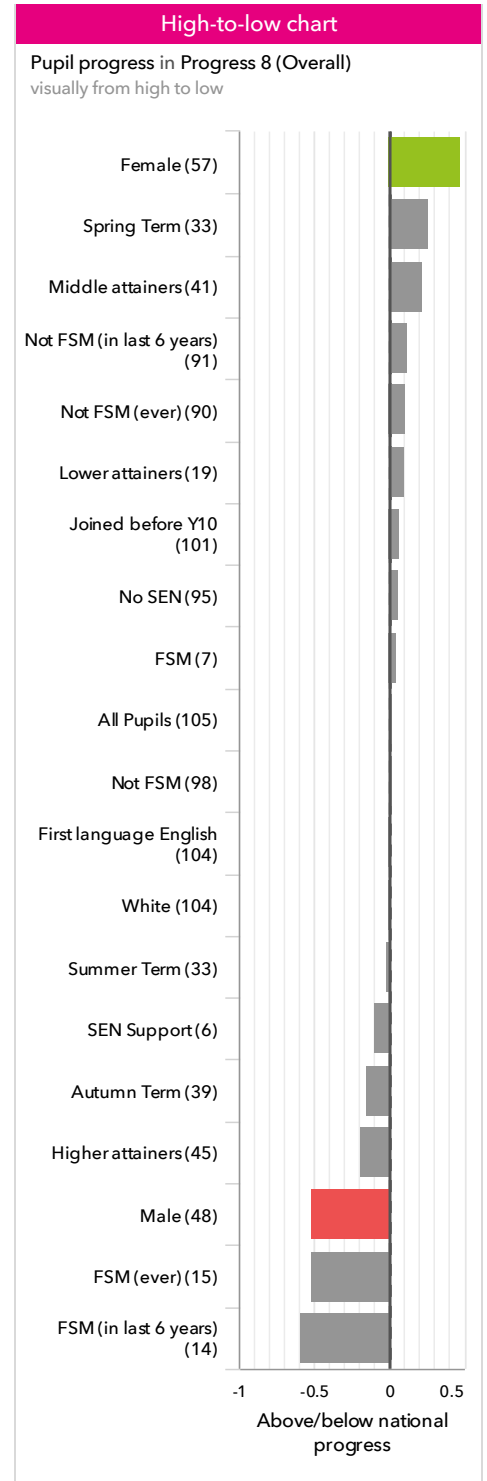
KS4 performance summary

	Actual results			Pupil progress		
	2016	2017	2018	2016	2017	2018
Number of Pupils / % Matched	128	131	107	97%	97%	98%
Attainment / Progress 8 (Overall)	4.5	4.3	4.6	-0.06	-0.11	+0.02
Attainment / Progress 8 (English)	4.7	4.4 -	4.9 ↑	-0.08 ↑	-0.41 - ↓	-0.08
Attainment / Progress 8 (Maths)	4.3	4.4	4.4	-0.07	+0.26 + ↑	-0.10 ↓
Attainment / Progress 8 (Ebacc)	4.0	3.9	4.6 ↑	-0.18 ↓	-0.03	+0.24
Attainment / Progress 8 (Open)	5.0	4.6 ↓	4.7	+0.08	-0.24 ↓	-0.04
% English & Maths (Grade 4+)	70%	63%	64%	+4%	+4%	+1%
% English & Maths (Grade 5+)	-	34%	40%	-	-1%	-0%
% Ebacc (Grade 4+)	27%	18%	23%	+1%	+0%	+1%
% Ebacc (Grade 5+)	-	15%	17%	-	-1%	+2%
% 5+ GCSEs (Grade 7+)	13%	8% -	14%	-3%	-4%	+1%
Average entries per pupil	-	9.9 +	8.5	-	+0.5 +	+0.2
Average entries per pupil (GCSE only)	-	9.0 +	7.8	-	+0.3 +	-0.1 ↓
% Pupils taking 3 single sciences	-	18%	19%	-	-2%	-7%

Pupil groups

KS4 Pupil groups performance 2018

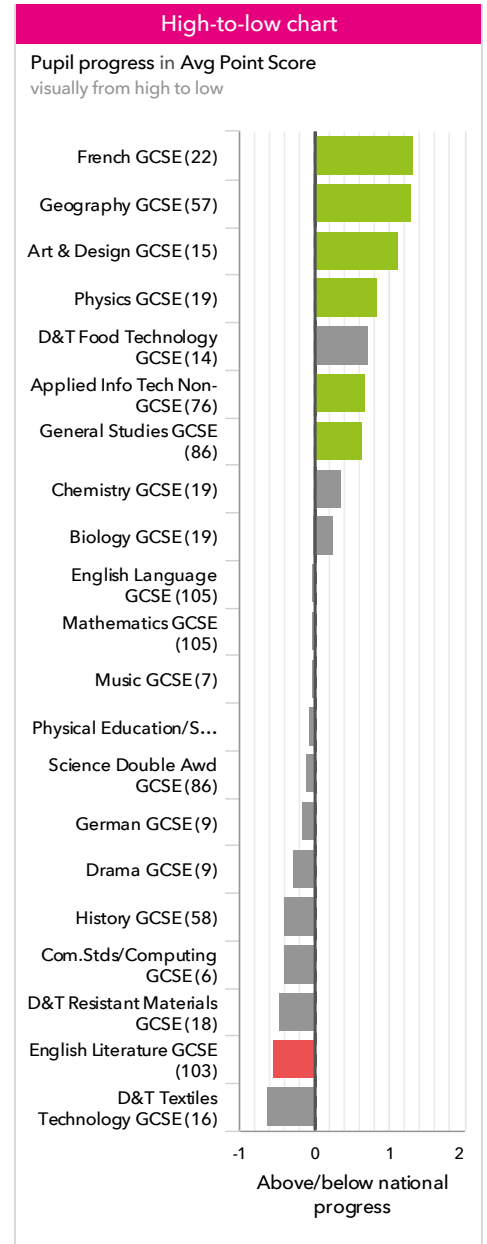
	Pupils	Actual results			Pupil progress			
		Attainment 8 (Overall)	% English & Maths (Grade 4+)	% Ebacc (Grade 4+)	Progress 8 (Overall)	% English & Maths (Grade 4+)	% Ebacc (Grade 4+)	
Summary	All Pupils	107	4.6	64%	23%	+0.02	+1%	+1%
Gender	Male	48	4.0	52%	15%	-0.52	-7%	-2%
	Female	59	5.1	73%	31%	+0.48	+7%	+3%
DFE Prior Attainment	Higher attainers	45	5.7	84%	44%	-0.19	-7%	+3%
	Middle attainers	41	4.3	63%	10%	+0.22	+9%	-1%
	Lower attainers	19	2.7	16%	0%	+0.10	+3%	-2%
Pupil Premium	FSM (in last 6 years)	14	3.3	36%	7%	-0.59	-6%	-4%
	Not FSM (in last 6 years)	93	4.8	68%	26%	+0.12	+2%	+1%
FSM	FSM	7	4.1	43%	14%	+0.05	-6%	-1%
	Not FSM	100	4.7	65%	24%	+0.02	+2%	+1%
FSM Ever	FSM (ever)	15	3.4	33%	7%	-0.52	-8%	-4%
	Not FSM (ever)	92	4.9	68%	26%	+0.11	+3%	+1%
Term of Birth	Autumn Term	40	4.5	53%	25%	-0.15	-9%	+3%
	Spring Term	33	5.0	79%	21%	+0.26	+12%	-4%
	Summer Term	34	4.5	62%	24%	-0.02	+2%	+2%
SEN Group	SEN Support	6	3.3	33%	17%	-0.10	-4%	+10%
	EHC Plan	3	2.9	0%	0%	+0.13	-9%	-1%
	No SEN	97	4.8	68%	25%	+0.06	+3%	+0%
EAL	First language not English	2	4.6	50%	0%	+1.03	+57%	-6%
	First language English	105	4.6	64%	24%	+0.01	+0%	+1%
Mobility	Joined in Y10 or Y11	4	2.2	0%	0%	-1.21	-20%	-2%
	Joined before Y10	103	4.7	66%	24%	+0.07	+2%	+1%
Ethnicity	White	106	4.6	63%	24%	+0.01	+0%	+1%
	Any Other	1	4.9	100%	0%	+1.03	+57%	-6%



Subjects

KS4 subject performance 2018

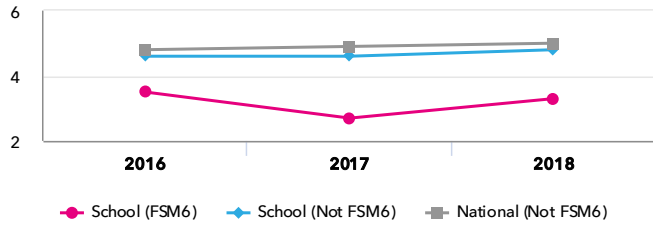
			Actual results			Pupil progress		
		Pupils	Avg Point Score	% Grade 4+	% Grade 7+	Avg Point Score	% Grade 4+	% Grade 7+
English and maths	English Language GCSE	107	4.7 ↑	71%	13% ↑	-0.02	+0%	-2%
	English Literature GCSE	105	4.2 ↓	59% ↓	15% ↑	-0.53 ↓	-15% ↓	-2%
	Mathematics GCSE	107	4.4	74%	12%	-0.02	+6%	-3%
Ebacc Subjects	Biology GCSE	20	6.5	100%	55%	+0.27	+6%	+11%
	Chemistry GCSE	20	6.4 ↑	100%	55%	+0.37 ↑	+8%	+13%
	Com.Stds/Computing GCSE	6	3.2	33%	0%	-0.40	-14%	-13%
	French GCSE	23	6.5 ↑↑	91% ↑	57% ↑↑	+1.33 ↑	+13%	+29% ↑
	Geography GCSE	57	6.1 ↑↑	86% ↑	46% ↑↑	+1.31 ↑↑	+18% ↑	+23% ↑↑
	German GCSE	10	4.4	70%	0%	-0.16	-1%	-10%
	History GCSE	60	3.8 ↑↑	50% ↑↑	12% ↓	-0.40	-7%	-6%
	Physics GCSE	20	6.8	100%	55%	+0.84 ↑	+8%	+16%
	Science Double Awd GCSE	87	4.0	65%	6%	-0.09	+4%	-5%
Other High Value Subjects	Applied Info Tech Non-GCSE	78	5.7 ↑	100% ↑	37% ↑	+0.68 ↑↑	+7% ↑	+14% ↑↑
	Art & Design GCSE	15	5.6	87%	33%	+1.13 ↑↑	+19%	+20% ↑
	D&T Food Technology GCSE	14	5.0	71%	21%	+0.72	+11%	+9%
	D&T Resistant Materials GCSE	18	3.1	22% ↓↓	6%	-0.45	+1%	-1%
	D&T Textiles Technology GCSE	17	3.7 ↓	47% ↓	18%	-0.62	-20% ↓	+0%
	Drama GCSE	9	4.3	56%	11%	-0.28	-13%	-4%
	General Studies GCSE	87	4.2 ↑↑	55% ↑↑	23% ↑↑	+0.64 ↑↑	+11% ↑	+12% ↑↑
	Music GCSE	7	4.7	71%	14%	-0.02	+5%	-7%
	Personal Finance Non-GCSE	1	0.0	0%	0%	-2.58	-52%	-4%
	Physical Education/Sport Studies GCSE	42	4.7 ↑	67%	24%	-0.05	-2%	+5%



Disadvantaged pupils

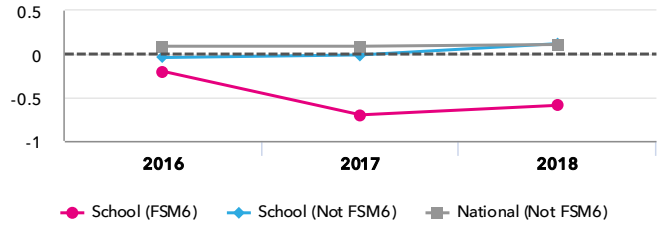
KS4 attainment for disadvantaged pupils 2018

Attainment 8 (Overall)

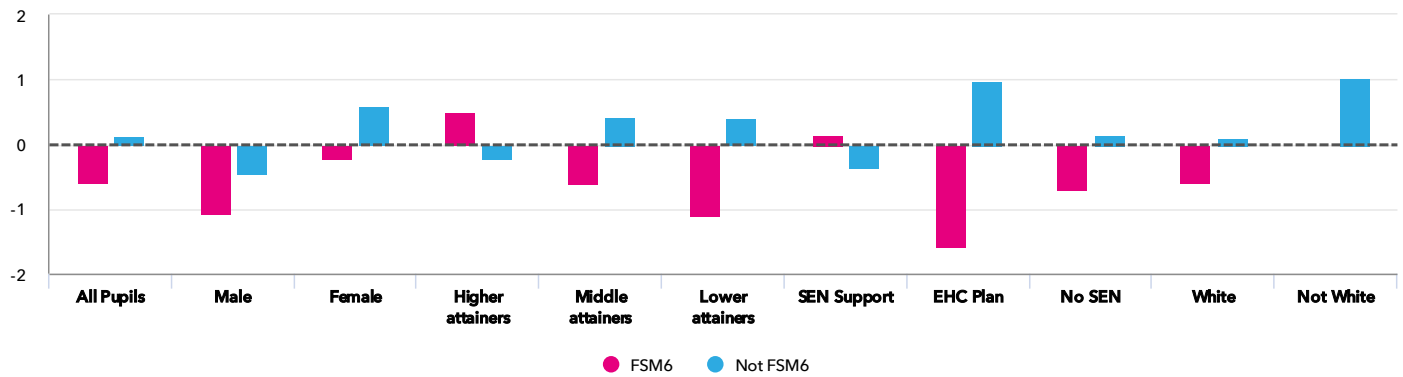


KS4 progress for disadvantaged pupils 2018

Progress 8 (Overall)



Progress gap Progress 8 (Overall)

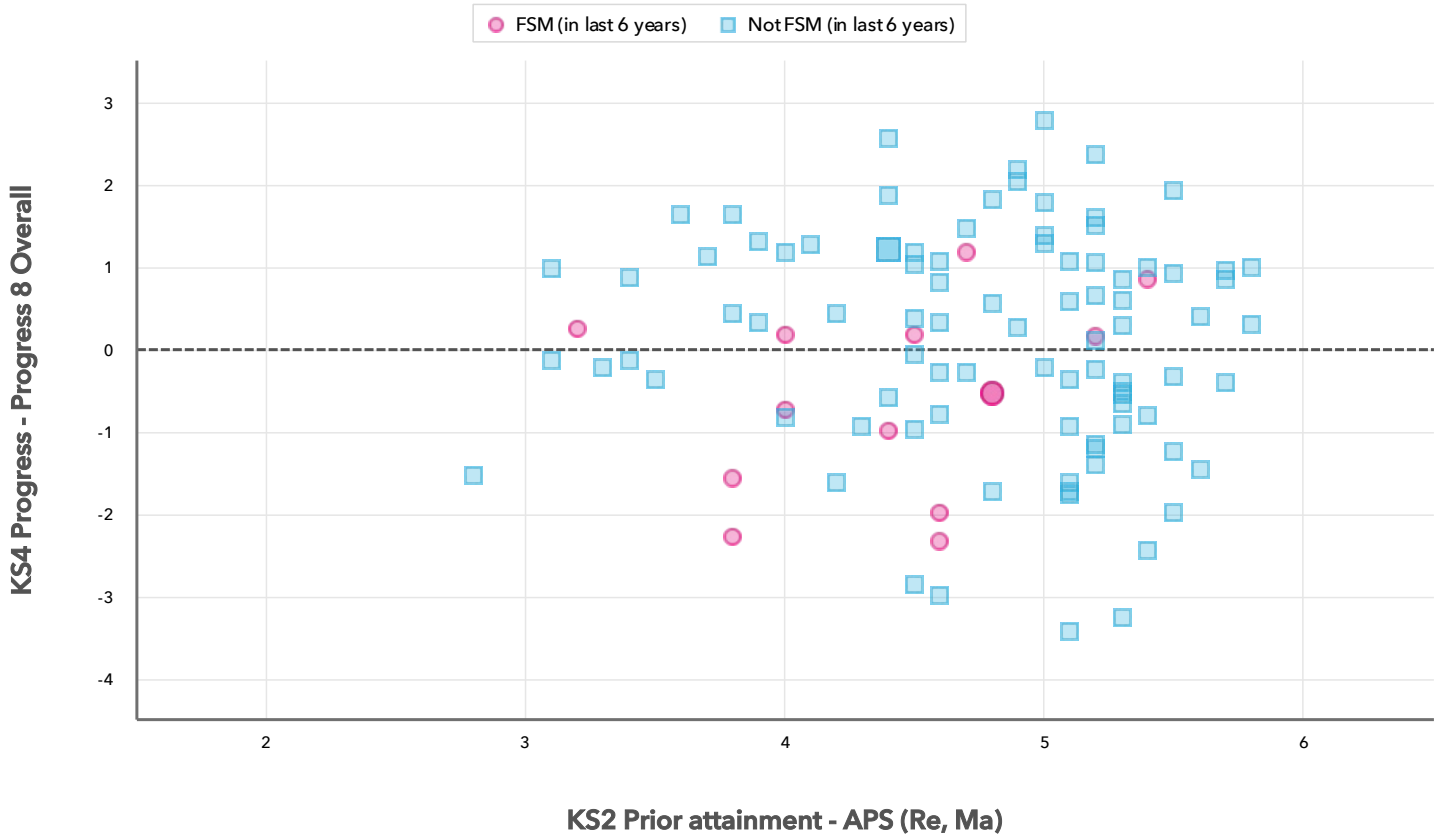


Attainment & progress

Pupils	Attainment			Progress					
	FSM6	Not FSM6	Attainment 8 (Overall)			Progress 8 (Overall)			
			FSM6	Not FSM6	Gap	FSM6	Not FSM6	Gap	
Summary	All Pupils	14	93	3.3	4.8	-1.5	-0.59	0.12	-0.71
Gender	Male	6	42	2.5	4.3	-1.8	-1.08	-0.44	-0.64
	Female	8	51	4	5.3	-1.3	-0.22	0.59	-0.81
DFE Prior Attainment	Higher attainers	2	43	6.3	5.7	0.6	0.49	-0.22	0.71
	Middle attainers	8	33	3.4	4.5	-1.1	-0.61	0.43	-1.04
	Lower attainers	4	15	1.7	3	-1.3	-1.09	0.41	-1.5
SEN Group	SEN Support	3	3	3.6	3	0.6	0.14	-0.35	0.49
	EHC Plan	1	2	1.3	3.6	-2.3	-1.58	0.99	-2.57
	No SEN	10	87	3.5	5	-1.5	-0.71	0.15	-0.86
Ethnic Group	White	14	92	3.3	4.8	-1.5	-0.59	0.11	-0.7
	Not White	-	1	-	4.9	-	-	1.03	-

Scatterplot

KS4 Pupil scatterplot 2018 107 pupils highlighted by Pupil Premium



Context

Context · Year 11 · 2017 / 2018

		Pupils	Proportion	
			School	National
Summary	All Pupils	107	100%	100%
Gender	Male	48	45%	51%
	Female	59	55%	49%
DFE Prior Attainment	Higher attainers	45	42%	39%
	Middle attainers	41	38%	42%
	Lower attainers	19	18%	14%
Pupil Premium	FSM (in last 6 years)	14	13%	26%
	Not FSM (in last 6 years)	93	87%	72%
FSM	FSM	7	7%	13%
	Not FSM	100	93%	86%
FSM Ever	FSM (ever)	15	14%	33%
	Not FSM (ever)	92	86%	66%
Term of Birth	Autumn Term	40	37%	33%
	Spring Term	33	31%	32%
	Summer Term	34	32%	34%
SEN Group	SEN Support	6	6%	12%
	EHC Plan	3	3%	4%
	No SEN	98	92%	84%
EAL	First language not English	2	2%	16%
	First language English	105	98%	84%
Mobility	Joined in Y10 or Y11	4	4%	4%
	Joined before Y10	103	96%	96%
Ethnicity	White	106	99%	75%
	Any Other	1	1%	3%

Absence · Year 11 · 2017 / 2018

		Pupils	Absence		Persistent absentees	
			School	National	School	National
Summary	All Pupils	107	8%	6%	24%	15%
Gender	Male	48	9%	6%	23%	15%
	Female	59	7%	6%	24%	15%
DFE Prior Attainment	Higher attainers	45	5%	5%	11%	9%
	Middle attainers	41	9%	7%	32%	17%
	Lower attainers	19	14%	9%	39%	25%
Pupil Premium	FSM (in last 6 years)	14	13%	10%	57%	28%
	Not FSM (in last 6 years)	93	7%	5%	18%	10%
FSM	FSM	7	17%	11%	57%	32%
	Not FSM	100	7%	5%	21%	12%
FSM Ever	FSM (ever)	15	12%	9%	53%	26%
	Not FSM (ever)	92	7%	5%	19%	9%
Term of Birth	Autumn Term	40	9%	6%	33%	16%
	Spring Term	33	8%	6%	13%	15%
	Summer Term	34	8%	6%	24%	14%
SEN Group	SEN Support	6	13%	11%	67%	30%
	EHC Plan	3	10%	11%	50%	29%
	No SEN	98	8%	5%	20%	12%
EAL	First language not English	2	5%	5%	0%	11%
	First language English	105	8%	6%	24%	16%
Mobility	Joined in Y10 or Y11	4	10%	17%	25%	50%
	Joined before Y10	103	8%	6%	24%	14%
Ethnicity	White	106	8%	6%	24%	16%
	Any Other	1	4%	6%	0%	13%