

BHS Update



24th April 2020



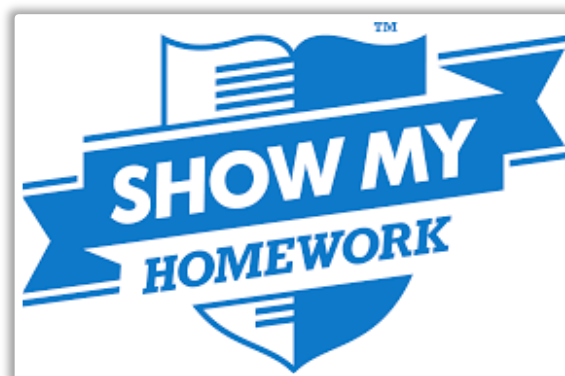
Attachments this week:

- FSM Letter
- Wellbeing Doc

Show My Homework Update

Please can I clarify that when staff set work on SMH, they have to set a completion date (otherwise it doesn't let you set a task). During this closure period, these dates are guidelines only - they are NOT set in stone and I do not want parents or students worrying about missed deadlines.

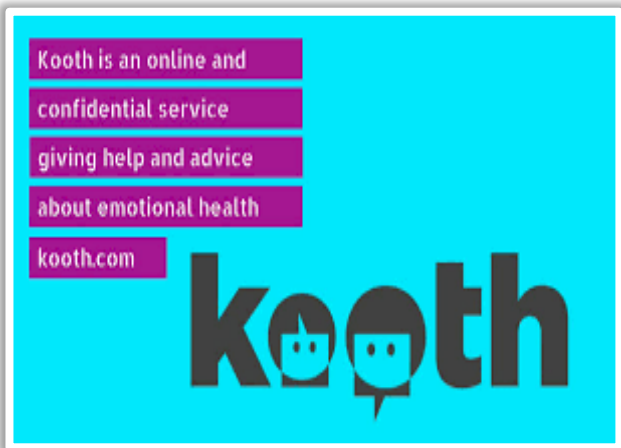
Similarly, if a message appears from staff asking about the work - this is intended to be a check-in to see if the student understands the task - it is not a 'telling-off'. We know that not all tasks will be completed, and we are not asking students to repeat a like-for-like school day at home. We just want to encourage them to remain engaged in their learning by trying to work on a range of subjects through the week, at the times that suit you as a family. If you feel we are not getting the balance right between 'checking-in' and 'chasing-up', please contact your child's Form Tutor for help.



Where can I get help if my child is struggling with work?

If it is with a specific subject, please try to contact the subject teacher via email. They will come back to you with some suggestions. If your child is struggling across the board, please contact Mrs Knight knights@bedalehighschool.org.uk - she will prioritise some help from one of our teaching assistants.





Where can I get support for my children or myself for our emotional wellbeing?

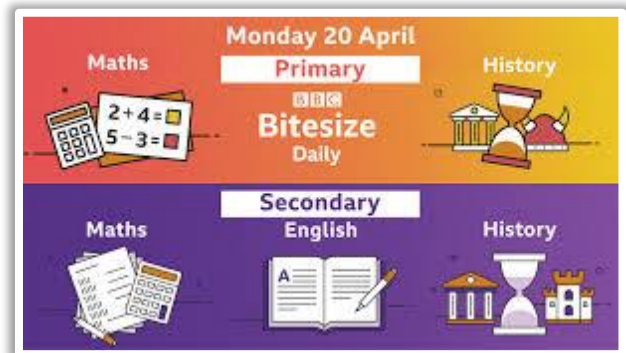
Please see the separate attached document that signposts you towards relevant support for you and your child's wellbeing. And of course, you can always contact us through the Form Tutor and other staff.

Resources that may help to vary the learning at home

- <https://www.bbc.co.uk/bitesize/dailylessons>
(Lessons from celebrities across a range of subjects, through the red button, online or BBC iPlayer)
- <https://educationendowmentfoundation.org.uk/covid-19-resources/support-resources-to-share-with-parents/>
(Resources specifically designed to share with parents on supporting home routines)

Remember:

- We are not expecting 5 hours of study every day. Lots of students are working in the morning then doing something active - a great routine!
- We know that levels of engagement will depend on your home circumstances - that's absolutely fine.
- Routine is good - but it's fine to change it to suit your needs.
- It's ok for them to spend more time on one task than another - but encourage a range of subjects through the week.



Delivery of paper work packs

We currently have almost 60 students that we are delivering to each week. We are trying to do this by hand in most cases to avoid postal delays. We know that access to computers may be limited with several children at home and many parents working from home too, so we are happy to help with this but appreciate your understanding that this is difficult to maintain while we still have to limit staff coming into school. If you are on this list, you should receive a fresh pack each Tuesday/Wednesday. Again, - students are not expected to complete everything! The packs are generic (to save time) so may have subjects in that are not part of their timetable. Please email me with any queries on any of this: kellyt@bedalehighschool.org.uk .

General Updates

GBBO: Thanks so much to all of you who contributed to the Great Bedale Easter Bake-Off (students and staff). We had a magnificent response.

Congratulations go to: Michaela Pampalou, Stanley Simpson and Connor Fox who were the 3 winners...but the standard of entry was incredible! A £10 Betty's voucher will be winging it's way to them. Christmas bake-off next anyone?



FAB SCHOOL WORK: We have received some brilliant examples of work from a range of subjects. Keep an eye out on FB for updates!

PPE VISORS PROJECT: Those of you not on Facebook may not have seen the great work in the community this week from our joint project with Aysgarth School. We teamed up with their staff to produce over 60 PPE visors which we distributed to 5 local carehomes. They were incredibly grateful. Thank-you to Aysgarth and to Lynn Riley-Fox and Sarah Allsop from BHS who made this happen.



SELF-TEACH CHALLENGE: The latest staff project to feature on FB is the self-teach challenge. Mr Gill got the ball rolling with a Science challenge from Mrs McGuinness (see his post on FB today). He has now passed the baton on to Mr Wild who will be grappling with a Maths challenge! The idea is that staff pick their worst subject and try to teach themselves a topic/question that is set by a colleague...it's hard!



VIDEO LESSONS: I had a query about staff teaching 'live' lessons over the internet. This is not something that I am pushing staff to do. It means being supremely comfortable in front of a camera and also competent in delivering learning in a very different way to normal. However, Mr Gill has experimented with a mini-lecture style film for History that he will be sharing with students on a Youtube channel, and I am happy for staff to follow suit where they feel comfortable to do so. If staff do wish to experiment with a 'live' video lesson, we will trial it first with a small group and take it from there.



STUDENTS IN SCHOOL: Every fortnight I email parents to confirm which students will still be attending provision in school. These should only be particularly vulnerable students, or students of key workers who cannot stay safely at home with anyone else. Please continue to respond to these emails so that we can stay on top of who we are expecting to be in and arrange appropriate provision. If you are unsure about this, please contact me.



Free School Meals

Mrs Knight has ordered 4 weeks' worth of FSM vouchers that should be with parents at the start of next week. Thank you for your patience with what has been quite a frustrating system...Mrs Knight has spent hours in front of the government website trying to sort this out, but clearly there has been massive demand across the country which has led to various technical issues. Please also see the attached letter and come back to Mrs Knight with any questions.



Year 8 Option Choices

Thank you for all your feedback to Mr Gill on this. He expects the final options choices for Yr 8 students to be confirmed and posted out in 2 weeks, after he has been back to some individuals to resolve any remaining issues.



Year 11 Reports

These have all been posted out. Please come back to Miss Temple or Mr Gill in the first instance if you have any queries, or if you need any further support with applications for post-16 provision. We will continue to update you as we hear more from the DfE with regard to anything concerning this year group.



And finally...

Unfortunately I cannot give you any details about when school will be re-opening - we keep seeing different reports in the press and I know nothing more than you do. There does seem to be an increasing sense that there may be some sort of phased return for some students before the summer holiday, but it remains to be seen.

In the meantime, we are so grateful to all of you and your children for working with us to get through this period. I know things are difficult, so please keep coming back to us with any issues, concerns or worries - as well as the positive comments which I always share with staff! Take care and stay safe.

