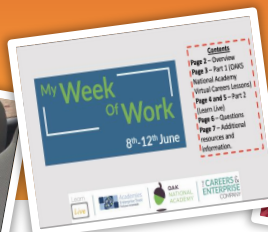


BHS Update



5th June 2020



Attachments this week:

- Week of Work PPT
- Kooth

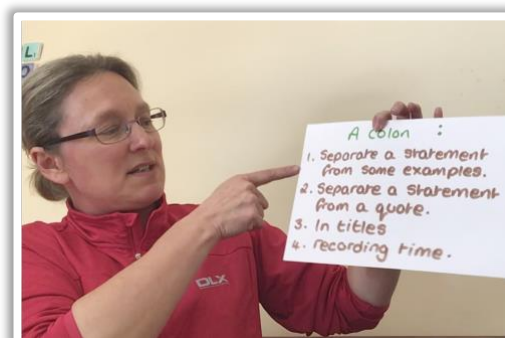
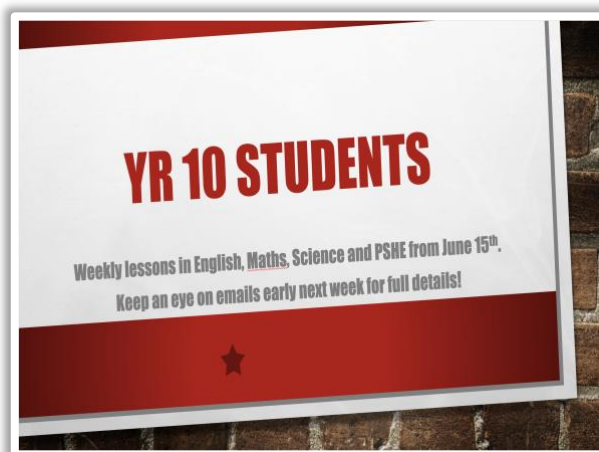
Re-opening for Year 10 Students

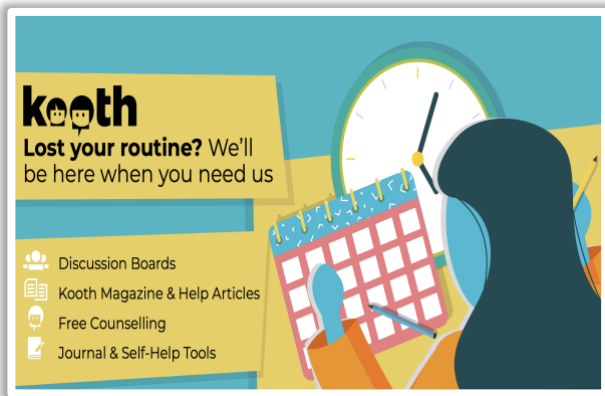
Thank you to parents for your patience with this. I had to change plans (again!) following new government guidance that came out during half term. Essentially, they pushed the date back to the 15th June and told schools that we can only have 25% of the year group in school at a time. I can now confirm that we will be offering 3 hours a week of taught lessons (Eng, Maths, Science and PSHE) to Year 10 students from the 15th June. Students will come in on one morning per week, on the same day each week (according to their group).

Parents will be emailed full and detailed information around risk assessments, guidance, safety measures, days/groups and routines early next week. Please also see the note on transport in the Briefing Section at the end of this document.

Remote Learning – Next Steps

Following the feedback from parents and students on Mr Wild's remote learning survey, we are planning to further strengthen this model to include more frequent opportunities to engage with video conferencing/live lessons/teacher recorded sessions. We know that this is something the students really value and Mr Wild is pulling together some guidance for staff and delivering some remote training on Monday. I am asking for your support in encouraging attendance of any sessions that are on offer. It takes a long time to plan an effective 'virtual' lesson, and it can be quite disheartening for a teacher if they then only have a handful of students who log-in to the lesson. As always, we are mindful that every family works within its own context and challenges, but we hope to see increasing engagement from students with these sessions, and we will be raising their profile in terms of notifying you and students of their availability. We will also offer some clear guidance on how to access these sessions for anyone who is unsure.





Learning and Pastoral Support

The longer the current situation goes on, the more important it is for us to ensure that we are doing everything we can to support you and your children. I'd like to remind you of some support streams that are available to you.

If you are struggling with any aspect of school work or have concerns with any other issues, remember that you can email one of the following:

Form Tutor: general check-ins/concerns/positives

Subject Teacher: subject specific queries

Head of Key Stage: Miss Bradbury/ Miss Temple

Pastoral Support: Mr McMillan, Mrs Gray, Mrs Freeman, Mr Rigby

Alison Parnaby: Issues with log-ins for SMH/school email, attendance

Alison Knight: for any inclusion, SEND or safeguarding concerns

Here you can link to some popular online resources that will support your child's study and may act as something different from their usual routine:

<https://www.gov.uk/government/publications/coronavirus-covid-19-online-education-resources>

I would also encourage you again to check the Bitesize Daily site for engaging resources:

<https://www.bbc.co.uk/bitesize/dailylessons>

Or call 01677 422419 during school hours (or leave a message out of hours) and we will come back to you as soon as we can. Please also see the links further on for wellbeing resources and support.

Year 10s: 'My Week of Work'

Miss Temple writes:

Normally in the summer term all year 10's would be getting ready for 'Work Ready Week' in school. Unfortunately due to the Covid-19 situation this will not be able to go ahead this academic year. However, we are providing students with the opportunity to take part in a remote/virtual careers week called 'My Week of Work' from **Monday 8th June - Friday 12th June**. Throughout the week, students will have access to a series of different video lessons and Q and A sessions. By the end of the week it is hoped that the students will have a better understanding of jobs available within different industries, recruitment and applications, employability skills and much more! We will be following up with guidance around post-16 routes once they go through to Year 11, but this process is designed to get them exploring and thinking about their future choices.

Each day next week I will put a timetable of sessions for that day and the relevant links on Show My Homework so that students can see what is on that day. I've also put together a really simple 'reflection task' which they can complete. This will be on SMH at the start of the week. We hope to share some feedback on Facebook so please send in updates of how you get on.



Part 2 – Learn Live Sessions		Tuesday 9th June
"Bringing the workplace alive with industry Q&A sessions"		
1	10:00am - 12:00pm, Health & Social Care	
2	12:00pm - 1:00pm, Mix of sectors	
3	1:00pm - 3:00pm, Creative & Digital	
Wednesday 10th June		
1	10:00am - 12:00pm, Engineering / Manufacturing	
2	12:00pm - 1:00pm, Mix of sectors	
3	1:00pm - 3:00pm, Construction	
Thursday 11th June		
1	10:00am - 12:00pm, Energy & Renewables	
2	12:00pm - 1:00pm, Mix of sectors	
3	1:00pm - 3:00pm, Mix of sectors	
Friday		
1	10:00am - 12:00pm, Mix of sectors*	
2	12:00pm - 1:00pm, Mix of sectors*	
3	1:00pm - 3:00pm, Your Next Steps	

Briefing Items

TRANSPORT FOR YR 10 STUDENTS

Mrs Knight continues to work with bus providers to arrange the right transport at the right times for pupils from the w/c 15th. **Please also continue to complete the passenger transport survey on a weekly basis.** If you have any questions, please get in touch with Mrs Knight. Please note there will be a small group of pupils who cannot get the bus home at lunchtime due to transport constraints. They will be able to stay in school for the full day, or parents can make their own arrangements. We will be in touch with these families and more details will come in the email at the start of next week.

ONLINE DRAMA SHOWCASE

Miss Cropper is still taking in entries for this event - see slide opposite for details and show off your inner superstar!

WELL DONE TO...

Ellie-Kaye McArthur: for part of her BTEC Fire Cadet course she made a video on seat belt safety during lockdown. We will be sharing it on our school Facebook page soon...keep an eye out.

STUDENT WORK ON FACEBOOK

We get loads of positive comments and feedback when students share what they have been up to during the school closure period. It's a really lovely way for us all to keep feeling connected. Thanks to all those who have sent in examples and please keep them coming!

THANKS FROM HERRIOT HOME HOSPICE

I wanted to share the message we received from Herriot Home Hospice following the fundraising you did before half-term...see below for details. Clearly your efforts were much appreciated!



On behalf of all the Herriot Hospice Homecare team, thank you so much to all the staff, students and parents of Bedale High school for raising over £200 from their charity draw. Your support will help us be there for more local families when they need it most. £200 could help provide one-to-one, telephone-based support for four families experiencing grief during the coronavirus with our bereavement support specialists. As a local charity we rely on the support of our community to continue delivering our services, so we can't thank you enough for your continued support during this challenging time.

Your certificate and thank you letter should be with you by next Thursday/Friday.

Thanks again and have a lovely, relaxing weekend!

KOOTH LIVE FORUMS

Please see the attached flier for notification of the live forums on offer to support various aspects of mental health and wellbeing.

NORTH YORKSHIRE YOUTH VOICE

The NYCC Youth voice organisation have recently created new social media accounts and have asked us to share these with our pupils. They post a range of things including general activities and things to do during lockdown. They are also currently undergoing recruitment for new local youth councils and one competition they are running offers the potential for a young person to be involved in a BBC documentary.
Instagram: @nyccyouthvoice
Facebook: NY Voice (@Northyorkshireyouthvoice)
Twitter: @YouthYorkshire

2020 BEDALE HIGH SCHOOL ONLINE SHOWCASE

Casting call for the following:

- DANCERS
- MUSICIANS
- SINGERS
- ACTORS
- CHEERLEADERS
- GYMNASTS
- STAND UP COMEDIANS

Would you like the opportunity to showcase your talent?

Now you can in our online summer showcase. All you need to do is practice and record your final performance and send it to Miss Cropper. After the deadline show reel will be posted onto the Schools Facebook account, showcasing everyone's talent!

CROPPER@BEDALEHIGHSCHOOL.ORG.UK
DEADLINE: MON 15TH JUNE



