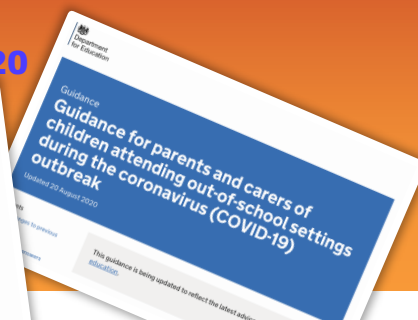
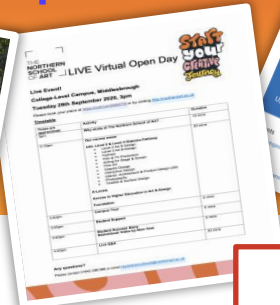


BHS Update



18th September 2020



Attachments this week:

- Open Eve ad
- Letter from Headteacher
- NSA flyer
- Empower flyer
- Letter from Mrs Bradley

Great start to the autumn term!

It's difficult to sum this up in a brief paragraph because there are so many things that we have been pleased with over the last week and a half. The new Year 7s have made a brilliant impression with their enthusiasm and friendly character - you would never guess that they have had to miss out on our usual transition process! It has also been lovely to welcome back our other year groups. Yes, school feels different with our one-way system, sanitising, staggered breaks and year group bubbles...but we have been reminded over recent days of the difference it makes to have the site filled with young people. This has given us all such a massive lift and we thank you for your support with this.



Year 7 Home-Learning

Last December we held a Homework Support Evening for the parents of the new Year 7s. We asked them for feedback on how students had coped with the workload after transition from primary school. It soon became clear that many year 7s had struggled to manage the sudden jump from receiving very little homework in year 6, to being given homework across every subject area in year 7. As a result of that feedback, we have limited homework for our current Year 7s to just English, Maths and Science for the first half-term. This should allow them more time to adjust to the new routines of secondary school and the associated workload. But as always, please do contact your child's form tutor if you have any concerns around this issue.

Locker Allocation

Unfortunately this has been delayed to the absence of the member of staff who has organised the re-allocation of lockers. This should be resolved over the coming fortnight and we apologise for the delay.



LOST PROPERTY?

We have a number of items of clothing, sportswear, phones, jewellery etc that have been gathered over the last year. Could students be reminded to call into Room 15 before the end of this half term. We will be disposing of any remaining items on our return to school, week commencing 2nd November.

Support for Year 11s

We all know how crucial this year will be for our current Year 11s, particularly after such a disjointed Year 10 and the school lockdown period. Miss Temple has launched a mentoring programme involving a wide range of school staff. The first meetings are taking place with Year 11s and they are designed to ensure that there is an extra checking point for students' wellbeing and progress, as well as offering reassurance that they have another channel of support available to them.

A massive thank-you also goes to the Maths staff who have already started their after-school revision sessions for both higher and foundation Year 11 students, every Monday from 3.05pm to 5.05pm (Statistics are every Thursday at the same time). Please can we ask parents to encourage their Year 11 children to take advantage of these sessions...we know they make a real difference.

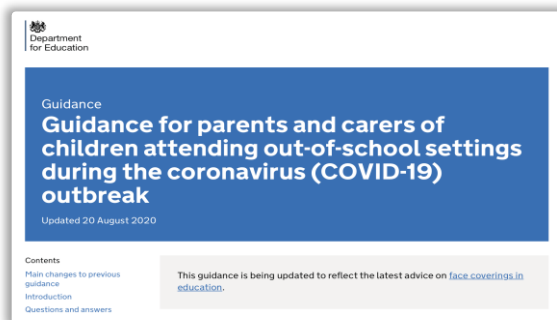
Planning for Localised Lockdowns: Internet Access Audit

Parents will be aware that schools are being asked to plan for the potential scenario of further localised lockdowns. Should this happen, we anticipate that we will be asked to resort to a tiered approach of blended learning. There are 4 different tiers (see opposite). We have already had experience of running 3 of these models during the previous lockdown but we are currently working to ensure that we are prepared for the tier 2 approach which is the one that most schools have not had to do yet. Needless to say, none of us want this to happen, but I would rather be prepared for any such scenario. In this event, we would once again need to know how many of our students are unable to access internet based learning.

To help us with our planning, please can you email admin@bedalehighschool.org.uk (or call 01677 422419) if you anticipate that your child will definitely **NOT have access to the internet.** If we do face the Tier 2 scenario, all staff will be in school at all times delivering a combination of in-school teaching plus the remote learning. We are unlikely to have the capacity to copy and hand-deliver the number of paper-based packs that we did during the lockdown period (almost 70 every week). It is therefore vital that we try to make contingency plans in advance for those students who we know cannot access internet based learning.

Click here to see the most up to date COVID-19 guidance for parents:

<https://www.gov.uk/government/publications/guidance-for-parents-and-carers-of-children-attending-out-of-school-settings-during-the-coronavirus-covid-19-outbreak/guidance-for-parents-and-carers-of-children-attending-out-of-school-settings-during-the-coronavirus-covid-19-outbreak>



A summary of the DfE approach to tiered systems that schools may be asked to implement:

- **Tier 1:** School remaining fully open to all students
- **Tier 2:** School adopts a rota system to limit attendance on site. Year groups attend school on a cycle for 2 weeks and then work remotely for 2 weeks.
- **Tier 3:** School will be asked to prioritise certain year groups (likely to be Year 11).
- **Tier 4:** School attendance limited to vulnerable children and key worker children.

Get Help Here...

Form Tutor/Pastoral Team/Miss Bradbury (KS3)/Miss Temple (KS4): for any wellbeing concerns: bradburys@bedalehighschool.org.uk / templec@bedalehighschool.org.uk
Subject Teacher: for any subject specific questions around learning tasks
General Queries: Email admin@bedalehighschool.org.uk or call 01677 422419

Food Preparation – Practicals at Home

Please see the attached letter from Mrs Bradley. She explains to parents that the current Covid-19 protocols have limited the amount of practical cooking lessons she can do with students in school, and is encouraging students to take part in optional practical sessions at home. We know this will not always be possible, but she has included some important guidance in case parents and students want to get involved. We hope that this will only be a temporary situation but in the meantime it could be a great way for some parent/child bonding time! *(As I write this I am imagining the carnage that would ensue if I tried to cook with any of my teenage children - but I'm sure you would do much better!).*



TikTok Video

We are aware of a real and particularly nasty viral post appearing on TikTok. The company are dealing with the situation and it should be cleared within the next few days. This gives the option to parents that they may want to prevent their child using TikTok temporarily and we have been asked to pass on the following advice which can be applied to many aspects of e-safety:

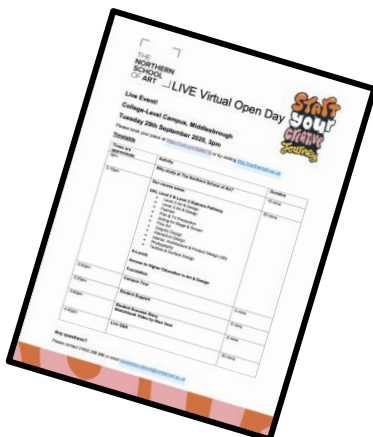
- Talk about what they would do if they see any 'nasty' content and who they should talk to
- Where have they seen it and can that channel be blocked?
- Have you reported it?
- Don't treat 'online' different to real life. To children, online IS real life.
- Look at the school website links for further support:
<https://bedalehighschool.org.uk/information/e-safety/> (some aspects being updated but still lots of relevant advice available).



- ⇒ You must wear them on the bus
- ⇒ You must wear them in shops
- ⇒ You should wear them on corridors when walking from lesson to lesson

Open Days for Post-16

Northern School of Art - Virtual Open Day, Tuesday 29th September. Please see the attached flyer.



Free Self-Esteem Course for teens aged 14+

Please see the Wellspring Empower flyer attached for more details.

