

# BHS Update



25<sup>th</sup> September 2020

Given our current situation, it is inevitable that we will need to keep parents up to date with significant amounts of Covid-19 related news. On the one hand, I apologise that this has to take up so much of my weekly update to you, but on the other hand - I think it makes sense to ensure that everyone is well informed around any key changes.

## COVID: Compulsory Face Coverings From Monday

Please be aware that from Monday 28<sup>th</sup> September, all students and staff will be required to wear face coverings when out and about on corridors in school. This includes on arrival, walking to form, to lessons, on the way to break and lunch, and walking through school to leave at the end of the day. This change reflects the following:

- Our one-way system is working well, but it is impossible to keep different year groups completely separate during transition times, so this extra precaution becomes more important.
- The precautions nationally are being ramped up as we see increasing numbers of cases in the UK, - it seems right that school mirrors this where we can.
- The number of students choosing to wear them (they were not mandatory until now) has dropped significantly.

The only exceptions will be where parents have contacted Mrs Knight to let her know about a medical condition that prevents a student from wearing a mask: [knighta@bedalehighschool.org.uk](mailto:knighta@bedalehighschool.org.uk) . Please can all parents ensure that their children come to school on Monday with a plain face-covering, and that you have echoed our own messages around the importance of this for the safety of those around them.



### FROM MONDAY 28<sup>th</sup> SEPTEMBER

- ⇒ You **MUST** wear them on the bus
- ⇒ You **MUST** wear them in shops
- ⇒ You **MUST** wear them on corridors at all times when walking around the site indoors.

## LOST PROPERTY?

We have a number of items of clothing, sportswear, phones, jewellery etc that have been gathered over the last year. Could students be reminded to call into Room 15 before the end of this half term. We will be disposing of any remaining items on our return to school, week commencing 2<sup>nd</sup> November.

## COVID: NHS Letter to Parents

The NHS have issued a letter to schools to share with parents. It clarifies the circumstances when parents should be asking for a test (in the case of one of the 3 symptoms). The purpose of the letter is to help reduce the number of unnecessary tests that are being requested by some parents when children have a runny nose, are sneezing or just generally unwell. The bottom line is: if the symptoms are not one of the 3 recognised symptoms, you do not need to book a test. The letter has been emailed out to parents but can also be seen here:

[https://content.govdelivery.com/attachments/UKDFE/2020/09/23/file\\_attachments/1553140/23rd%20September%20-%20PHE%20letter%20to%20parents%20and%20guardians.pdf](https://content.govdelivery.com/attachments/UKDFE/2020/09/23/file_attachments/1553140/23rd%20September%20-%20PHE%20letter%20to%20parents%20and%20guardians.pdf)

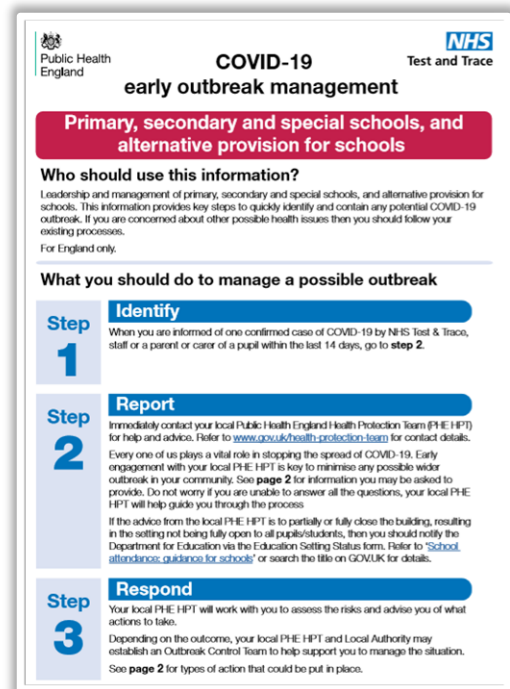
## COVID: Sharing Information with Parents

If school receives a positive case of coronavirus, we will inform parents. Clearly, we cannot share names of students and other personal details, but there is a process in place which ensures that we will be able to trace contacts of the individual who has tested positive. This information is shared with the Health Protection Team on the same day, and they advise the school as to who we need to send home. Over the last couple of weeks, a number of children have been sent home with potential coronavirus symptoms. This is usually a persistent cough, and in all cases so far, - this has proven NOT to be Covid related. However, we continue to play it safe with such symptoms, and we ask parents to understand that if a child is sent home with a persistent cough one day, we cannot then take them back into school the next day, (even if the cough is better). The symptoms in young people can be very mild, which is why schools are being told to play it ultra-safe, and the child will not be allowed to return until a negative test result has been confirmed.

## COVID: New NHS App

NHS Test and Trace has launched the NHS COVID-19 app. The app has been launched to help control the spread of coronavirus. It will do this by alerting people who may have been exposed to infection so that they can take action.

The app is available to download on smartphones for anyone aged 16 or over. This means that some students in Year 11 will be eligible to use the app and benefit from its features. In addition to the guidance for schools and further education colleges which we published yesterday, NHS Test and Trace has published guidance and resources to support the use of the app which are available to download. See link opposite.



<https://covid19.nhs.uk/pdf/introducing-the-app.pdf>

## BHS New School Website

Parents will already be aware that we have been working on Phase 1 of refreshing our school site. In consultation with parents and students we chose a range of motivational quotations over the summer which are now displayed around the building. They look fantastic. We also updated the signage and re-painted the pillars at the front of the building.

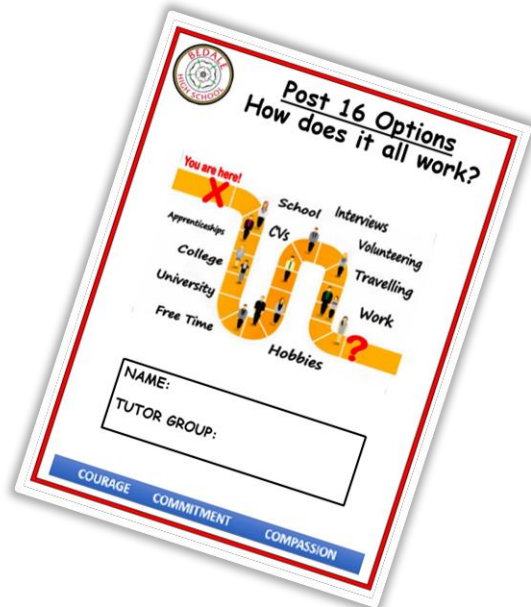
This week we have completed another important goal in launching our new school website. There are still some sections which we are in the process of updating, and we will soon have a range of new photographs to use, but the main thing is that it is now clear, well-organised and easy to use. Please take a look and let us know if there is anything else that you would like to see on there: [www.bedalehighschool.org.uk](http://www.bedalehighschool.org.uk)



## Post 16 Guidance Booklet

Miss Temple has produced a booklet to support Key Stage 4 students when they are looking ahead to their chosen post-16 routes. It is a really useful reference guide and could also be an invaluable support to parents to help you prompt discussions with your children over what they might want to do after Yr 11. You can access the booklet through our new website by going to the Curriculum section and clicking on CIAG.

**PLEASE CAN PARENTS REMIND YR 11s TO REGULARLY CHECK THEIR SCHOOL EMAIL FOR IMPORTANT MESSAGES FROM MRS RILEY-FOX REGARDING EXAMS INFORMATION**



### **HOMEWORK CLUB – NOW UP AND RUNNING!**

**Get some help with Mrs Siddique:**

**Year 7, 8 & 9:**

**Wednesdays 3pm - 4pm in The Base**

**Year 10 & 11:**

**Thursdays 3:05pm - 4pm in The Base**

## Yr 9 GCSE Information Evening

Thank you so much to all those parents who 'tuned in' for this event on Thursday evening. You may not have realised this, but you will forever go down in history as the ones who took part in our first ever virtual parent event!

It seemed to go smoothly and there were some really helpful questions from parents that we shared with everyone at the end. Remember if you need a one to one chat or follow up, please email

[admin@bedalehighschool.org.uk](mailto:admin@bedalehighschool.org.uk)

# Equipment Checklist



<input type="checkbox"/>	large sensible bag	
<input type="checkbox"/>	pencil case	
<input type="checkbox"/>	black pen & spare	
<input type="checkbox"/>	pencil & sharpener	
<input type="checkbox"/>	scientific calculator	
<input type="checkbox"/>	protractor & compass	X
<input type="checkbox"/>	scissors	X
<input type="checkbox"/>	rubber	X
<input type="checkbox"/>	ruler	X
<input type="checkbox"/>	green pen	X
<input type="checkbox"/>	highlighter	X
<input type="checkbox"/>	glue stick	
<input type="checkbox"/>	alcohol free hand-sanitiser & tissues	
<input type="checkbox"/>	facemask & sealable plastic bag	
<input type="checkbox"/>	filled water bottle	
<input type="checkbox"/>	reading book	
<input type="checkbox"/>	locker key	
<input type="checkbox"/>	reward card	

## Biking to School

If any students wish to bike to school, please ensure that you have first of all contacted us to issue a permission pass (email [admin@bedalehighschool.org.uk](mailto:admin@bedalehighschool.org.uk)). Before we issue the pass, we will need parents and the student to confirm the following in writing:

- Agree to wear a helmet
- Agree to wear hi-vis jacket
- Agree to bring a lock
- Agree that the bike is left on site at the owner's risk, and that school cannot be responsible for any theft/damage (we have bike rails but they are not in a secure or locked location on site).



## Lockdown Reward Assemblies

This week Miss Temple has been doing the upper school reward assemblies to acknowledge the fantastic work that our students did during the months of closure. Students were nominated by their teachers at the end of the summer term and have been issued with certificates to acknowledge their work. We know from our conversations with parents, the returned work on Satchel One, the paper work that was sent back in to school over the summer and the interviews that we carried out with students and parents - that the vast majority of students showed incredible focus and self-discipline in their approach to independent study during this period.



### Get Help Here...

**Form Tutor/Pastoral Team/Miss Bradbury (KS3)/Miss Temple (KS4):**  
for any wellbeing concerns: [bradburys@bedalehighschool.org.uk](mailto:bradburys@bedalehighschool.org.uk) /  
[templec@bedalehighschool.org.uk](mailto:templec@bedalehighschool.org.uk)

**Subject Teacher:** for any subject specific questions around learning tasks

**General Queries:**

**Email:** [admin@bedalehighschool.org.uk](mailto:admin@bedalehighschool.org.uk) or call 01677 422419