

# BEDALE HIGH SCHOOL

Courage

Commitment

Compassion

Only 2 weeks until the full PPEs begin for Year 11s...please encourage them to attend revision

**Friday 11th November 2022**

**Your child's Form Tutor:**  
**Pastoral Support Team:**  
**Miss Bradbury (Head of KS3):**  
**Miss Temple (Head of KS4):**  
**SEND & Inclusion Queries (Mrs Clayden):**  
**General Queries:**  
**Subject Teacher:**

### Get Help Here...

surname + 1<sup>st</sup> initial @bedalehighschool.org.uk  
[woodwardl@bedalehighschool.org.uk](mailto:woodwardl@bedalehighschool.org.uk)  
[bradburys@bedalehighschool.org.uk](mailto:bradburys@bedalehighschool.org.uk)  
[templec@bedalehighschool.org.uk](mailto:templec@bedalehighschool.org.uk)  
[claydenv@bedalehighschool.org.uk](mailto:claydenv@bedalehighschool.org.uk)  
[admin@bedalehighschool.org.uk](mailto:admin@bedalehighschool.org.uk) or call 01677 422419  
surname + 1st initial @bedalehighschool.org.uk

## Year 11 Geography Visit to Leeds

**Mr Childe writes:** As part of their GCSE course, our Year 11 Geographers participated in a fieldtrip to Leeds on Wednesday. The purpose of this trip was to collect primary data for their fieldwork investigation into 'changes in a major UK city', which will be then used to write a report back in the classroom after the PPEs.


The first part of the day involved students undertaking a land use survey, pedestrian count and Environmental Quality Survey at five sites across the city centre; this was followed in the afternoon with a walk through the inner-city areas and inner suburbs to explore how these zones of the city contrast with the city centre.

Throughout the day, the behaviour of the students was impeccable, with extensive high-quality data being collected that will support the writing up of this enquiry later in the year.




# Weird and Wonderful Science (Part 2)

**Yr 7 STEM Club at  
Bedale High School**




Thurs Week B  
Lab 7 at 1.30



**STEM**

SCIENCE · TECHNOLOGY · ENGINEERING · MATHEMATICS



Last week in the Year 7 STEM Club we heard about how the students were doing some chromatography on Autumn leaves to see if we could separate the compounds that cause the different colours.

The photos below show the results - Mrs faint was delighted! If your Year 7 child is a budding scientist and wants to be involved, please tell them to pop along to STEM club.



## History Extra-Curricular club

This club is returning with Miss Tallentire following its popularity from last year. Please encourage your child to come along and discover a new interest, or to just enjoy one they are already passionate about!



**Do you have an interest in History?  
JOIN HISTORY CLUB!  
Room 1 Tuesdays 3:15-4pm**

## JUST 'B' Parent Workshops – Mental Wellbeing

**WORRIED  
ABOUT YOUR CHILD  
OR TEEN'S  
MENTAL HEALTH?**

**FREE WORKSHOPS FOR ANYONE  
WHO LIVES WITH YOUNG  
PEOPLE AND WANTS TO HELP  
THEM IMPROVE THEIR  
MENTAL WELLBEING.**

**Empowering parents, guardians and carers in  
North Yorkshire to feel more confident and skilled in  
supporting mental health concerns. Workshops - held in  
Harrogate and Thirsk - will include:**

- Suicide prevention awareness.
- Strategies for supporting individual needs.
- Information on accessing and navigating mental health systems.

All workshops will be tailored around needs of parents, guardians or carers. Plus wellbeing support group for young people.

**Accessing the workshops:**

Parents, guardians and carers can refer themselves. via Just 'B'.

**T: (01423) 856 790**

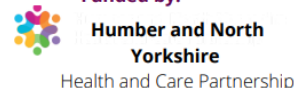
**E: [justbCYP@justb.org.uk](mailto:justbCYP@justb.org.uk)**

Referrals can also be made via CAMHS, Crisis CAMHS, Early Help Workers and other relevant professional bodies.

**Delivered in partnership by:**



**Funded by:**



# BHS Christmas Fayre

Following the huge success of last year's Christmas Fayre at Bedale High School, we are delighted to announce that this year's event will take place on **Friday 18th November 2022 from 1700 to 1900 in the main hall at BHS.**

If you would like to run a stall at this event, please email [loughlink@bedalehighschool.org.uk](mailto:loughlink@bedalehighschool.org.uk). A table top stall costs just £10 and we kindly request that you also donate a prize to our raffle which will be drawn on the night.

This event is completely free to attend and suitable for the whole family. Why not treat yourself to a festive evening of tasty treats, catching up with friends and getting ahead of the Christmas shopping game?



The poster is a vertical rectangle with a gold background. On the left is a stylized illustration of a nutcracker in a red uniform and black hat. In the center, a dark blue rectangle contains the text 'BEDALE HIGH SCHOOL' in white. To the right of this is a red bow with two white circular ornaments. Below these elements, a large red rectangle contains the text 'CHRISTMAS FAYRE' in dark blue. Underneath this, the date and time 'FRIDAY 18TH NOVEMBER 2022 1700 - 1900' are written in dark blue, followed by 'FREE ENTRY' in black. Below that, the text 'COME ALONG FOR AN EVENING OF CHRISTMAS SHOPPING, GREAT FOOD, FESTIVE MUSIC!' is written in black, flanked by two white stars and two red starburst shapes. At the bottom left is the Bedale High School crest, which is a circular emblem with a white rose in the center and the words 'BEDALE HIGH SCHOOL' around it. At the bottom right, a red rectangle contains the text 'IF YOU WOULD LIKE A STALL AT THIS EVENT, PLEASE EMAIL LOUGHLINK@BEDALEHIGH SCHOOL.ORG.UK' in white.

**BEDALE  
HIGH  
SCHOOL**

**CHRISTMAS  
FAYRE**

**FRIDAY 18TH NOVEMBER 2022  
1700 - 1900  
FREE ENTRY**

**COME ALONG FOR AN EVENING OF  
CHRISTMAS SHOPPING, GREAT FOOD,  
FESTIVE MUSIC!**

**IF YOU WOULD LIKE A STALL  
AT THIS EVENT, PLEASE  
EMAIL  
LOUGHLINK@BEDALEHIGH  
SCHOOL.ORG.UK**



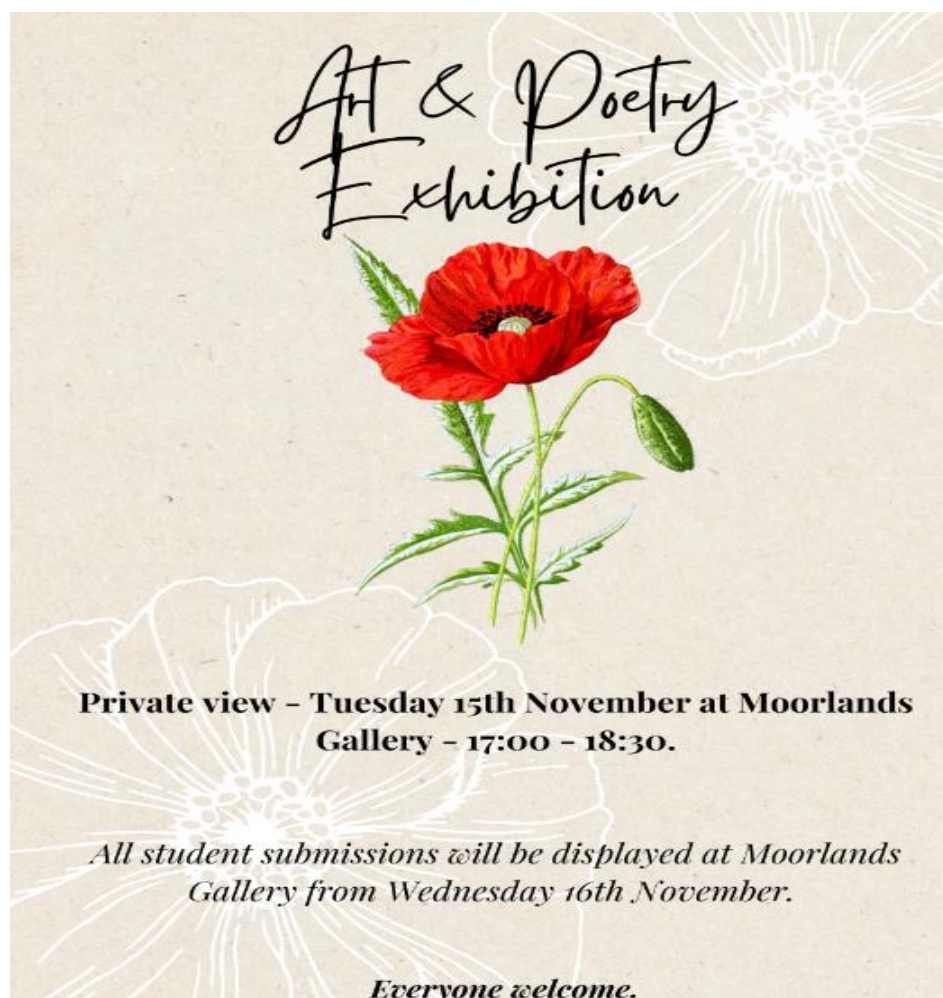
# What's Coming Up?

DATE	EVENT	AUDIENCE
15 <sup>th</sup> November	Science and DT Primary Enrichment Day	Primary School Visitors
18 <sup>th</sup> November	Christmas Fayre	All Welcome!
23 <sup>rd</sup> November	Year 8 Virtual Parent Evening 4-7pm	Year 8 students and parents (Letters sent out this week)
24 <sup>th</sup> November	Year 11 PPEs begin with Art exam	Year 11 students
25 <sup>th</sup> November	Teacher Training Day	School closed to all students

## BHS Art Exhibition

Our first ever exhibition at Moorlands Gallery will take place on Tuesday 15th November from 17:00 - 18:30. All of the work has been submitted from our students as part of an Art & Poetry competition. Work will be on display in the gallery until Friday 18th November.

Everyone is welcome to come along to the private view on Tuesday to celebrate our students work and enjoy some refreshments. We hope to see you all there at 9 Market Place, Bedale DL8 1ED.



# Letter from Miss Ackers

Dear Parent / carer,

## POPPY INSTALLATION AND FUNDRAISER

Remembrance Day is a national opportunity to remember the service and sacrifice of all those that have defended our freedoms and protected our way of life. To commemorate, all students in KS3 have been taking part in a series of ceramic workshops during their Art lessons, which has allowed them to create and glaze a poppy for a whole school Remembrance Display.

Their hard work and enthusiasm within these lessons has allowed our Art Department to create a wonderful installation of the poppies outside of the front of our school (see images below). We would now like to use this as an opportunity to raise money for the Royal British Legion by selling the poppies within our community.

The Royal British Legion is the country's largest Armed Forces charity who provide lifelong support to serving and ex-serving personnel and their families. If you wish to help us raise money for this wonderful charity and therefore wish to purchase your child's poppy, we are asking students to bring £2 to their next Art lesson. Once we have received a contribution, they will be able to take their work home as a keep's sake.

**Please make sure, that you child takes their work home by the 17<sup>th</sup> of November. Any poppies that are left over, will be sold at the Christmas Fayre on Friday 18<sup>th</sup> November.**

As always, we would like to thank you for your support in helping us raise money for such a brilliant charity. Please get in touch with myself via email at [ackersp@bedalehighschool.org.uk](mailto:ackersp@bedalehighschool.org.uk) if you have any questions.

Yours Sincerely,  
Miss P Ackers  
Teacher of Art







No  
Pre Booking  
Required

**Saturday**

QE

# OPEN EVENT

**10.30am - 2.00pm**

**19<sup>th</sup> November**

QUEEN ELIZABETH SIXTH FORM COLLEGE

OPENS  
EVENTS

# Well Done Maisie!

At the weekend, Maisie Morris (Year 8) competed at the North East Regionals for swimming. She qualified for the regionals in 50m backstroke and 100m backstroke. On the first day, she swam in the 50m backstroke and got a 1.1 second gain in her PB and also finished 7th. Then on the second day, she swam in the 100m backstroke and swam just slower than her PB and finished 13th. These places were for the 13 year old age group. This is an amazing achievement, to not only represent the county, but now also the region! Well done Maisie!

# WW2 Primary Enrichment Day

On Tuesday we welcomed year 5 pupils from several local primary schools to take part in our WW2 enrichment event day.

The pupils had a fantastic day exploring aspects of WW2 including the blitz, rationing and even enjoyed a VE Day celebration tea party!

Our amazing subject ambassadors for History were on hand to support our visitors throughout the day and a great time was had by all.

Thank you to Miss Haydon and Miss Tallentire for all their work on this event.





# Mental Health Signposting

*We have now been awarded the NY Healthy Schools Silver Award!*

## Wellbeing Support from Bedale High School

There are lots of places you can access help and support...



[www.thegoto.org.uk](http://www.thegoto.org.uk)

This is a website developed by the NHS North Yorkshire Clinical Commissioning Group. It is a single point of information that promotes different mental health support services (like a signpost). The website is designed primarily for young people but there is information for parents and carers too.

### Contact details:

Mr T Kelly

[kellyt@bedalehighschool.org.uk](mailto:kellyt@bedalehighschool.org.uk)

Mrs V Clayden

[claydenv@bedalehighschool.org.uk](mailto:claydenv@bedalehighschool.org.uk)



Please don't hesitate in contacting Mr Kelly or Mrs Clayden if you have any concerns during the break or if you need support with something.



Text 07520 631168 to start a supportive text conversation with friendly professional support

### Another useful resource:

[Bedalehighschool.org.uk](http://Bedalehighschool.org.uk)

↓  
Safeguarding

↓  
Where to go to for help

## Further Information

In our area, there are a range of national and locally-funded support forums for children and young people which are now embedded, including:

<https://thegoto.org.uk/> The Go-To Website - the home of wellbeing and mental health in North Yorkshire. The website helps young people find the right help and support to stay well, whatever is happening in their life.



**Healthy Schools**  
North Yorkshire

Childline - free, confidential, anonymous 24/7 service for anyone under 19 in the UK with any issue including emotional and mental health.

YoungMinds Textline - free, 24/7 text support for young people across the UK experiencing a mental health crisis, with texts answered by trained volunteers supported by experienced clinical supervisors

Buzz Us Text Messaging Service - confidential advice, support and signposting from a wellbeing worker within one working day via text for young people aged 11-18 across North Yorkshire and York.

There is further information - including health professionals' referral forms - on [NHS North Yorks CCG Website](#).

# See next page for more signposting



# This May Help Resource

This May Help has been created to support parents and carers with concerns about their child's mental health.

The subjects covered on this website have been chosen by families and young people who have gone through their own mental health challenges. What helped them may also help you.

The films offer advice across six main subject areas, with ten additional films offering supporting information. The films can be viewed in any order at any time.

Each film has a dedicated page where you'll also find helpful advice and links to other resources. The text for each subject is available from the downloads page here:

<https://thismayhelp.me/downloadable-advice/>

## Child's mental health



## Self-harm



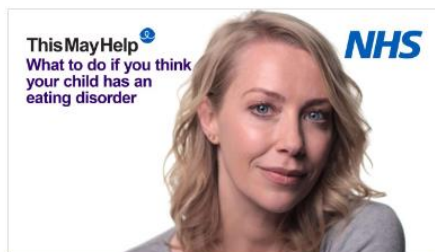
## Gaming & online activity



## Teenagers safety



## Eating disorders



## School avoidance



You can access the website here:

<https://thismayhelp.me/>