

BEDALE HIGH SCHOOL

Courage

Commitment

Compassion

LOVE YOUR DRAMA? See details further on
for Mr Maddocks' new lunchtime club!

Friday 27th October 2023

Your child's Form Tutor:

Pastoral Support Team:

Miss Bradbury (Head of KS3):

Mrs Clayden (Head of KS4):

SEND & Inclusion Queries (Mrs Knight):

General Queries:

Subject Teacher:

surname + 1st initial @bedalehighschool.org.uk

woodl@bedalehighschool.org.uk

bradburys@bedalehighschool.org.uk

claydenv@bedalehighschool.org.uk

knighta@bedalehighschool.org.uk

admin@bedalehighschool.org.uk or call 01677 422419

surname + 1st initial @bedalehighschool.org.uk

Yr 10 Drax Power Station Visit

Mrs Jennison writes:

Last week, over two days, Year 10 students visited Drax Power Station as part of a science trip organised by Mrs Faint. It was an opportunity for them to see how electricity is generated and it is directly relevant to the P1 Energy topic they have all been studying this year.

Drax Power Station now provides the most renewable power of any single location in the UK.

The tour included an interactive presentation, a bus tour around the site as well as a guided walk inside the very heart of the station. Seeing the size of the turbines, generators and towers themselves was awe-inspiring. Students were surprised at how loud it was and the necessity to wear ear protection.

Drax no longer burns coal. Instead, it burns imported pellets of wood; by-products from the timber industry in North America. Pellets are brought from the ports to the power station via rail on a daily basis.

One group also visited the Skylark nature reserve on Barlow Mound, a site where waste products that couldn't be recycled from the power station was sent. This area has now been reclaimed and transformed into an area of natural beauty. Whilst on the site, the students took part in some team building exercises.

Due to the impact of storm Babet, the second team, unfortunately didn't get to visit the Skylark centre and instead were tasked with building a marble run (inside!) that would keep the marble moving constantly for 15 seconds - which is harder than it sounds; we saw lots of creative and inventive designs. Overall, a very interesting day and the year 10 pupils were a credit to the school.





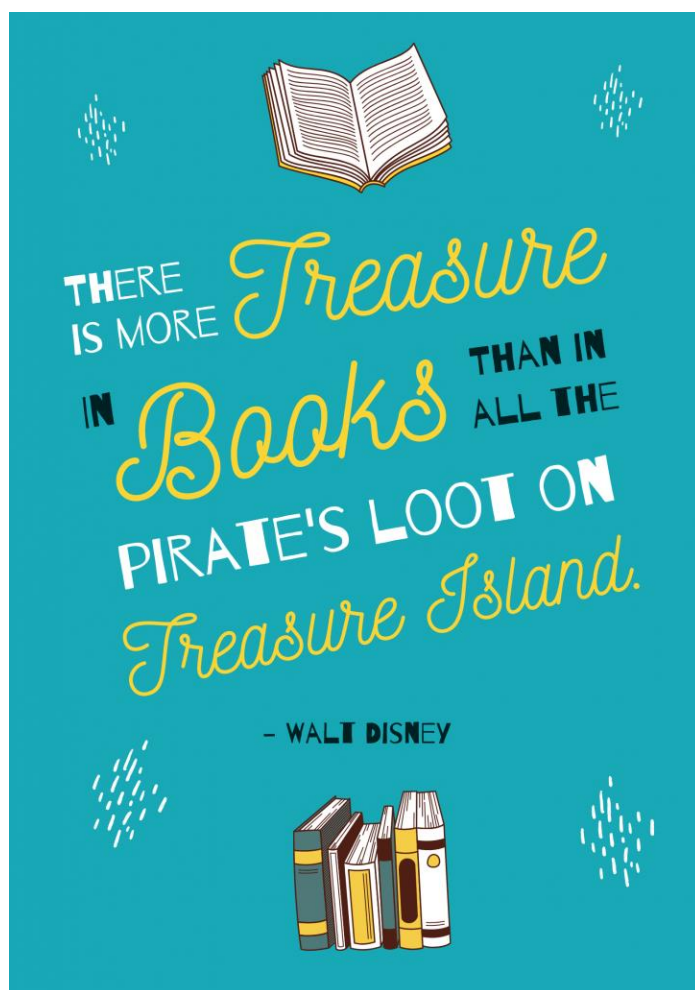
Join Our Quest to Promote Reading!

Mrs Cann is on a mission - a mission to establish Bedale High School as a place where reading is loved and valued by all of our students. Many of our students already love to read - but it is fair to say that others could read more and enjoy the associated benefits that come from this; from feeling more confident when it comes to tests and exams, to just simply enjoying the wonder of being transported to another world through an amazing story - reading is something that offers us all a huge reward. Mrs Cann has now set up a Scholastic book order so any parents who are considering buying books for their children, can now order through Scholastic, have them delivered for free to school AND help earn free books for the school.

The link is here:

[Bedale High School - Scholastic Shop](#)

The order closes on 30th November 2023. Books are meant to be delivered 3 or 4 working days after the order closes, so we should have plenty of time to get them to parents, especially if they are buying books as Christmas presents.

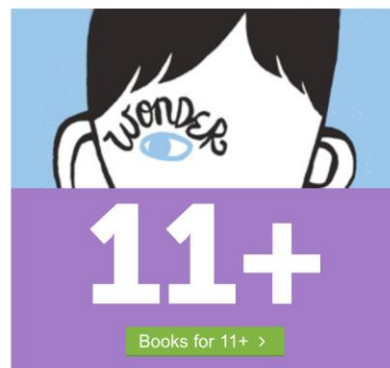


Bedale High School

Fitzalan Road, Bedale, North Yorkshire, DL8 2EQ ([Not your school?](#))

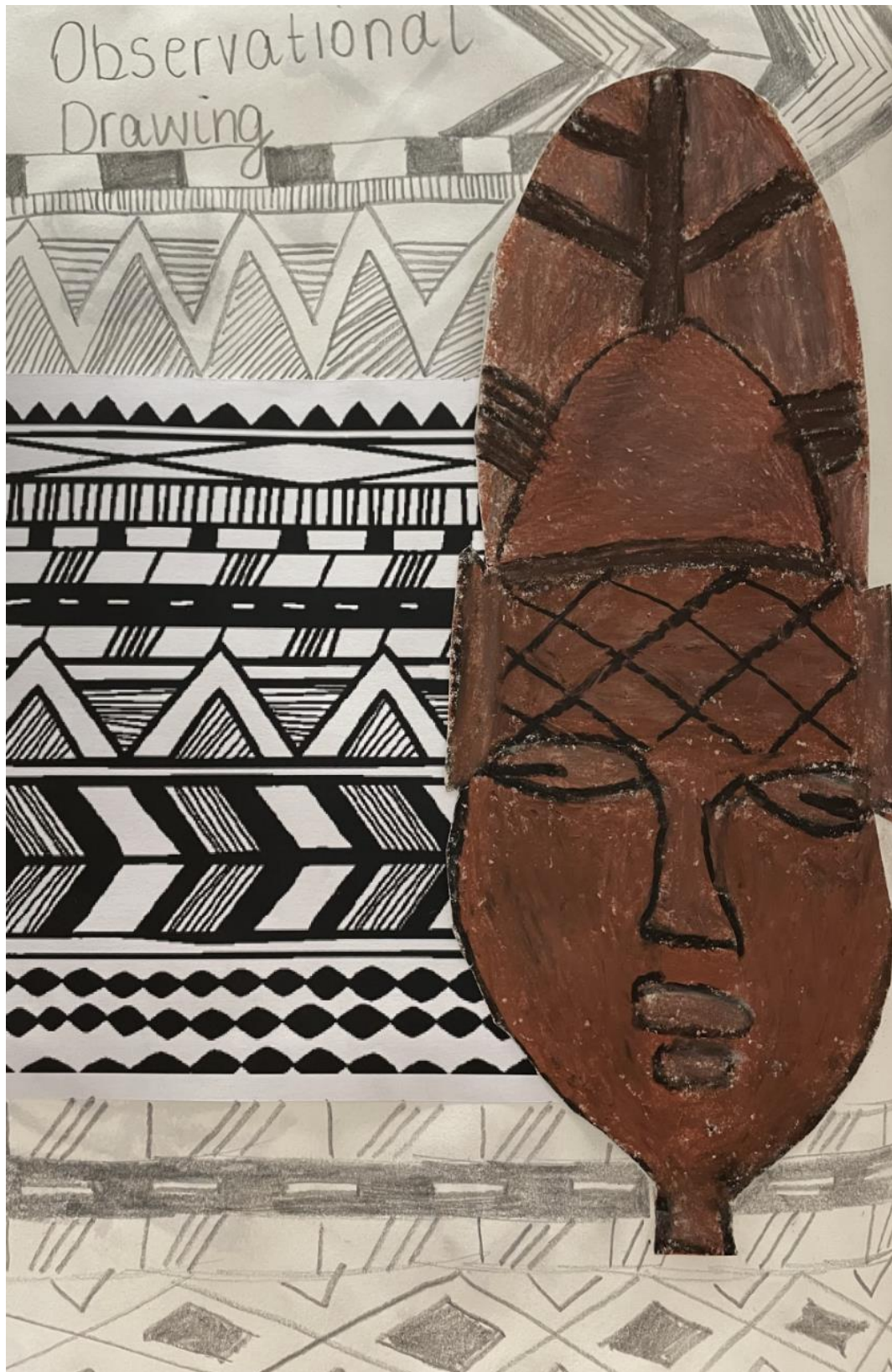
BookClubs

Great news - we've got a Book Club order running until **November 30th, 2023!** Get **FREE P+P** to school and help us earn more free books by shopping now.



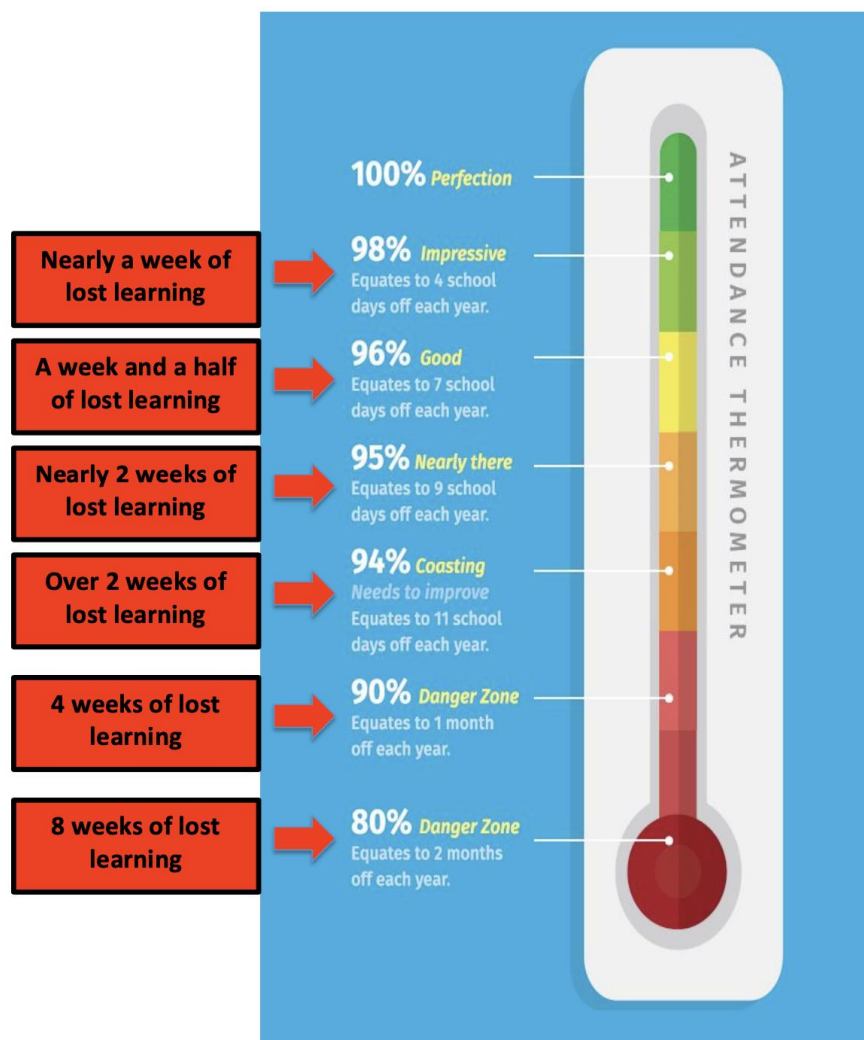
Why shop with Scholastic Book Clubs?

- ✓ Earn free books for your school.
- ✓ Enjoy free delivery to your school.
- ✓ Discover great new books from only £1.99.



Good Attendance Makes a Positive Difference To All Aspects of School Life

ATTENDANCE THERMOMETER SHOWING THE IMPACT OF ABSENCE ON LEARNING



If you are concerned that your child is not attending school enough, or worried that they are regularly missing days, please contact us for a friendly chat so that we can help you and them overcome any barriers to being in school. We know how difficult this situation can be for some families and have lots of helpful ideas...it starts with a conversation.

Tel. 01677 422419
(Ask for Pastoral, Mrs Hayes, or Mrs Woodward)

Or email: admin@bedalehighschool.org.uk and just ask for someone to contact you.

Uniform Issues?

We have a good stock of spare uniform that is clean and ready to wear. Please contact the pastoral team if you are struggling to buy a replacement issue as we can sometimes offer an item through school.

Girls' Football

Miss Temple Writes:

The U15 girls football team get off to a fantastic start in the Area Cup with a 7-2 win against Thirsk! Despite the relentless rain and muddy conditions, the girls put in a brilliant performance on Thursday to come away with the win and progress to the next round of the cup.

Bedale created lots of chances from the start but only found them self 2-1 up at half time due to some excellent goalkeeping from Thirsk. However, the girls played some very impressive football throughout the second half to come away 7-2 winners.

A huge well done to all of the players for displaying our core values superbly!

Player of the match goes to Lili E for a great performance in midfield and scoring 4 goals. Eibhlin H, Izzy N and Faith H all got 1 goal each too.

The girls look forward to the next round of the cup and we look forward to cheering them on!



Mrs Taylor writes:

On Monday this week, two KS3 girls' teams went across to Richmond School to partake in a Football Festival event. The older team (years 8 and 9) finished in joint first place with Wensleydale after a tough game against a well-matched team. They were placed in the final after beating Selby in the semi-finals.

The year 7 team put in some fantastic performances throughout the festival, with various teams commenting on how good our goalkeeper (JJ - Jessica Jefferson) was.

Unfortunately, this team didn't quite reach the semi-final, but they remained positive and offered great support to the year 8/9 team while they were playing in the finals.

The girls were all exceptionally well-behaved and did a great job on representing BHS. They showed great sportsmanship by taking it in turns to roll on and off substitutes, encourage each other, discuss team positions and tactics. They were very polite to the student leaders, members of staff and other teams.

Well done girls - it was a pleasure to watch how well you performed throughout the festival.

Ripon Grammar Sixth Form Open Evening



Ripon Grammar School

Sixth Form Open Evening

Thursday, November 9
6.30pm

A chance to meet students and staff and discover more about our outstanding Sixth Form

DAY & BOARDING PLACES AVAILABLE FOR SEPT 2024

Apply by February 5, 2024



Book your boarding tour on our website
www.ripongrammar.co.uk

PE Notice

Mr Bielby writes:

As we are experiencing a colder climate at the moment, which is likely to continue after half-term, the PE Department would encourage all students to invest in some base layers (see examples attached to this newsletter). These are already on the student's kit list but quite a lot of students don't seem to be prepared for the weather when having their lessons outside. All the boys should also bring their reversible rugby jumper too.

Y7-11 Boys Rugby:

The Y7-11 boys will be starting rugby after half-term, so not only will the base layers keep them warm but also prevent them from getting covered in mud. I would also strongly encourage the boys to purchase a gum guard for rugby. You are welcome to buy these from a retailer or dentist, or alternatively we sell them in the PE office for £2 whilst stocks last (these might not be suitable for Y7&8 though as they are more the adult sizes).

Interested in becoming one of our Midday Supervisors? Email admin@bedalehighschool.org.uk and join our friendly team of paid lunchtime duty staff

What's Coming Up?

Keep an eye on the changes and updates to events as this table will be updated weekly. I hope that it gives parents and carers an idea of the fantastic range of opportunities and events that are available to BHS students. We firmly believe that the happiest students are the busiest students – the ones who take advantage of the experiences we can offer them...please encourage your child to get involved!

| DATE | EVENT | AUDIENCE |
|--|--|--|
| 28 th Oct - 5 th Nov | Half Term Holiday | All students |
| 9 th November | Primary Enrichment Day - Maths | Maths Subject Ambassadors This event has been rearranged for the summer term |
| 10 th November | Festival of Remembrance - Ripon Cathedral | Service Family Students |
| 13 th November | Yr 11 Pre-Public Exams PPEs (1) | Year 11 Students |
| 15 th November | Theatre Trip - Everybody's Talking About Jamie | TBC |
| 16 th November | BHS Presentation Evening | Award winners and families |
| 17 th November | Employability Skills Workshop | Year 9 Students |
| 23 rd November | Parent Evening | Year 8 Parents and Students |
| 24 th November | Christmas Fair | All welcome! |
| 29 th - 30 th November | Follow-up Careers Interviews | Year 11 students |
| 30 th November | Year 9 reports sent home | Year 9 parents and students |

OPEN TO ALL
FROM Y7 - Y11!

DRAMA CLUB



THURSDAY LUNCHTIMES
AT
13:30 - 14:00PM
IN THE DRAMA STUDIO

Are you interested in any aspects of Drama? Would you like a fun, safe space to get involved in more Drama? Luckily for you, Mr. Maddocks is holding a Drama Club for all on Thursday lunchtimes in the Drama Studio! Come along and find out what's happening and how you can get involved! All pupils from Y7 - Y11 are welcome!

JUST 'B'

Anxiety, grief, low mood, isolation. . .

**If you want to talk
we're Hear to Help**

Call (01423) 856 799

8am - 8pm, seven days a week

Available seven days a week to all across North Yorkshire.

Calls are charged at local rates. Visit
<https://bit.ly/localcallcharges>.

Free, confidential support line for adults, young people and children.

We can also offer support for you - or your family and friends - around plans for end of life, including matters relating to bereavement and funerals.

JUST 'B'

OASIS

**COUNSELLING AND EMOTIONAL
SUPPORT FOR FAMILIES AND
FRIENDS OF PEOPLE
WHO GAMBLE.**

If someone close to you gambles, we can give you the emotional support you need.
Free, confidential service available across North Yorkshire.

HELPLINE

0300 303 4434*

SEVEN DAYS A WEEK, 8AM-8PM

For information on our support, visit justb.org.uk

*Calls are charged at local rates. Go to ofcom.org.uk for call charge guides and check with your mobile provider.



This service is funded by
**GambleAware's Community
Resilience Fund**

GambleAware



BEDALE HIGH SCHOOL HALF TERM PUMPKIN CARVING CHALLENGE 2023



Carve your pumpkin and share a photo via
woodl@bedalehighschool.org.uk

The top three carved/decorated pumpkins
will receive a spooky chocolate prize!
Entry deadline - 31.10.23

COURAGE

COMMITMENT

COMPASSION



Festive Christmas Fair

**FRIDAY 24TH NOVEMBER
2023**

1700 - 1900

**AT
BEDALE HIGH SCHOOL**

ALL WELCOME

FREE ENTRY

If you would like to run a table top
stall at this event please email
pta@bedalehighschool.org.uk

Mental Health Signposting

We have now been awarded the NY Healthy Schools Silver Award!

Please visit our updated Mental Health and Wellbeing section on the school website: [Mental Health and Wellbeing at BHS](#)

Wellbeing Support from Bedale High School

There are lots of places you can access help and support...



www.thegoto.org.uk

This is a website developed by the NHS North Yorkshire Clinical Commissioning Group. It is a single point of information that promotes different mental health support services (like a signpost). The website is designed primarily for young people but there is information for parents and carers too.

Contact details:

Mr T Kelly

kellyt@bedalehighschool.org.uk

Mrs V Clayden

claydenv@bedalehighschool.org.uk



Please don't hesitate in contacting Mr Kelly or Mrs Clayden if you have any concerns during the break or if you need support with something.



Text 07520 631168 to start a supportive text conversation with friendly professional support

Another useful resource:

Bedalehighschool.org.uk
↓
Safeguarding
↓
Where to go to for help

Further Information

In our area, there are a range of national and locally-funded support forums for children and young people which are now embedded, including:

<https://thegoto.org.uk/> The Go-To Website - the home of wellbeing and mental health in North Yorkshire. The website helps young people find the right help and support to stay well, whatever is happening in their life.



Childline - free, confidential, anonymous 24/7 service for anyone under 19 in the UK with any issue including emotional and mental health.

YoungMinds Textline - free, 24/7 text support for young people across the UK experiencing a mental health crisis, with texts answered by trained volunteers supported by experienced clinical supervisors

Buzz Us Text Messaging Service - confidential advice, support and signposting from a wellbeing worker within one working day via text for young people aged 11-18 across North Yorkshire and York.

Self Harm help: Here you can see a link to the YoungMinds website and a guide aimed at supporting parents who have children who may be self-harming. It is a useful and user-

friendly guide which include further ideas for help:

<https://www.youngminds.org.uk/parent/parents-a-z-mental-health-guide/self-harm/>

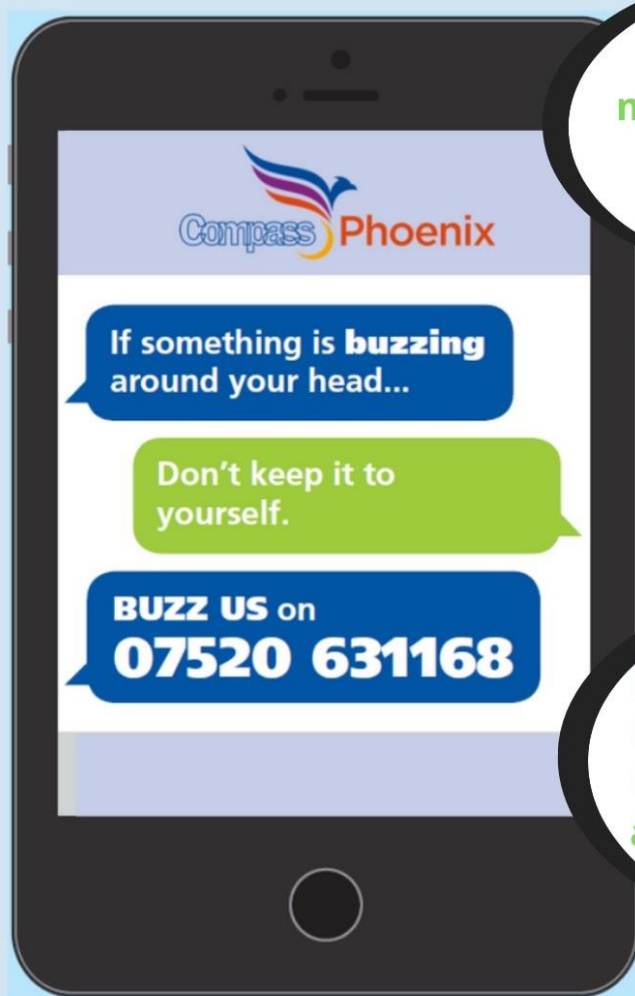
There is further information - including health professionals' referral forms - on NHS North Yorks CCG Website .

Compass Buzz Us Service for 11-18s

BUZZ US



BUZZ US is an anonymous and confidential text-messaging service for young people aged 11-18 in North Yorkshire where you can speak to a worker of Compass Phoenix to receive advice, support and signposting for any mental health and wellbeing issues you may have.



BUZZ US

Thank you for
messaging in, how
can I help you
today?

I've been feeling
really low in mood
for the past few
months

I'm sorry to hear this,
shall we work through
this together and look
at some strategies that
may help.

