

Friday 17th November 2023



# BEDALE HIGH SCHOOL

Courage

Commitment

Compassion

Please fill out the e-consent form for the upcoming vaccinations using the following link: <https://yny.schoolvaccination.uk/flu/2023/northyorkshire>. An email will also be sent with this link attached. Any queries or problems, please contact Miss Goddard at [goddardt@bedalehighschool.org.uk](mailto:goddardt@bedalehighschool.org.uk)

Your child's Form Tutor:

Pastoral Support Team:

Miss Bradbury (Head of KS3):

Mrs Clayden (Head of KS4):

SEND & Inclusion Queries (Mrs Knight):

General Queries:

Subject Teacher:

surname + 1<sup>st</sup> initial @bedalehighschool.org.uk

[woodl@bedalehighschool.org.uk](mailto:woodl@bedalehighschool.org.uk)

[bradburys@bedalehighschool.org.uk](mailto:bradburys@bedalehighschool.org.uk)

[claydenv@bedalehighschool.org.uk](mailto:claydenv@bedalehighschool.org.uk)

[knighta@bedalehighschool.org.uk](mailto:knighta@bedalehighschool.org.uk)

[admin@bedalehighschool.org.uk](mailto:admin@bedalehighschool.org.uk) or call 01677 422419

surname + 1<sup>st</sup> initial @bedalehighschool.org.uk

## Remembrance Day

**Mrs Woodward writes:**

Last week we took 30 of our Forces students to take part in the Festival of Remembrance for Military children at Ripon Cathedral.

This is an annual tradition which is now into its 11th year. Our students represented the school to a very high level on the day itself, showing enormous dignity and respect during the service.

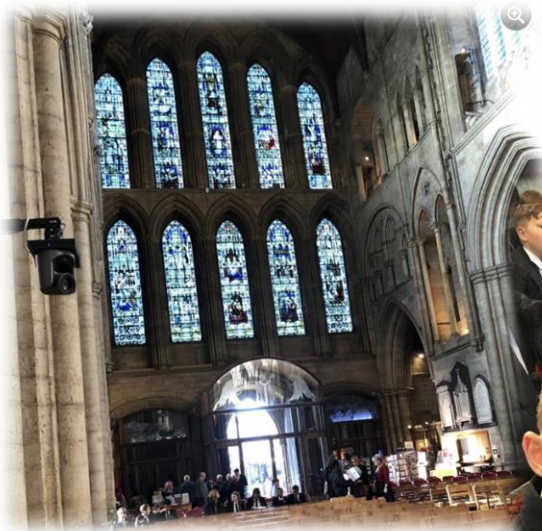
Izzy and Ryan, both in Year 10, were interviewed by a producer from BFBS Radio during the event and showed great maturity and compassion within their respective responses to his questions.

It was a very moving ceremony and lovely to see what it meant to so many of our forces students, both from BHS and other schools in the area.

The photos below also include some pics of Cadets Lewis, Owen and Rhys from the event they attended at the Romanby/Northallerton Cenotaph last Sunday.









# Yr 11 PPEs and Art PPE

Year 11 students have been completing their first set of internal exams this week - a key milestone in their journey towards their actual GCSEs.

Mr Dunne and I have been really impressed with their attitude and work-rate. The vast majority of them have been taking them very seriously and putting a lot of effort into their exam performance.

Thank you to parents and carers for all of the support and encouragement they are giving - please keep this going as they carry through into next week.

## ART PPE NEXT WEEK:

Mrs Dixon would like to pass on the following information for any Art students in advance of their Art PPE next week:

Art PPEs take place next week for our year 11 students. This is a great opportunity for students to get a feel for what their 10 hrs of supervised time will be like in the summer!

Arriving promptly to room 31 on the day of the PPE is essential so that Miss Dixon can ensure all students know what they will be completing in the 5 hours and that resources are to hand.

Mrs Judd and Miss Dixon are there to support as well as remind students of the necessary behaviour and focus that that is required.

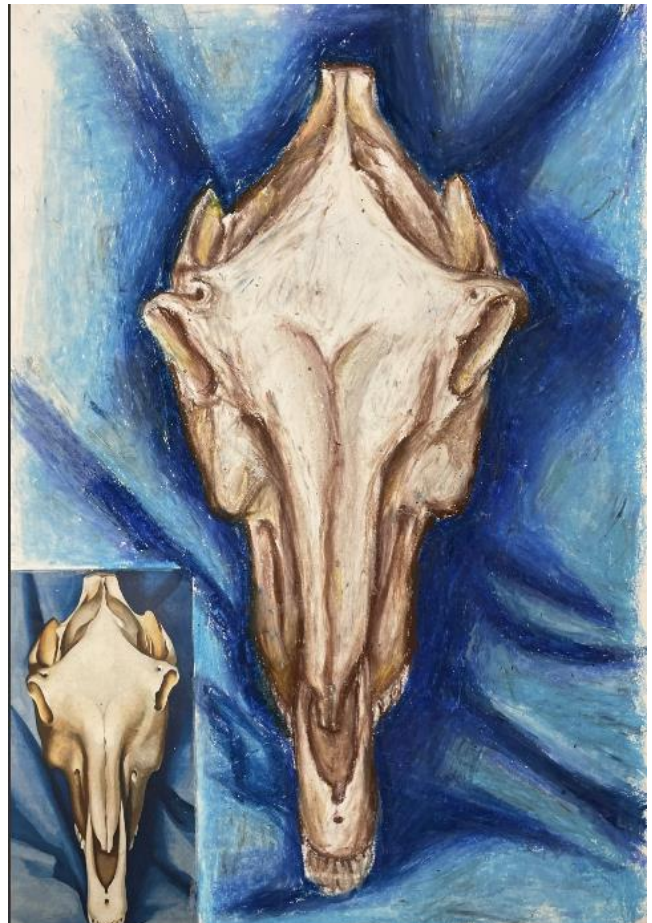
Students are already clear that this PPE is under the same strict conditions as their other examinations, despite it being a practical and in their normal classroom.

We therefore anticipate that they will make the most of this opportunity to make significant progress with their Non Examined Assessment work (which is due for submission at the end of term).

During break and lunch Miss Dixon will be available to discuss any concerns a student may have. We are looking forward to seeing what this cohort achieve!



**Charly Simpson**  
**Yr 10**



## Year 10 Work Experience

A reminder to Yr 10 parents / carers that the Work Experience email, containing the information to download / log-onto the app has now been sent. All students are required to download this and log-in as soon as possible. Please be aware that it is the student's responsibility to source their own work experience placement, and the deadline for this is Friday 15th December. Any questions come to Mr Childe  
[childea@bedalehighschool.org.uk](mailto:childea@bedalehighschool.org.uk)

## Year 8 Parent Evening Next Week

This event is at 4pm on Thursday 23<sup>rd</sup> November. Please see attached letter for details. This is the first face to face parent evening we have held since before Covid. We have a lot of appointments to fit in, so please understand that staff will need to stick to the 5-minute slot. Senior staff will also be available and you will be able to book a follow-up telephone appointment if you need to discuss anything in more detail.

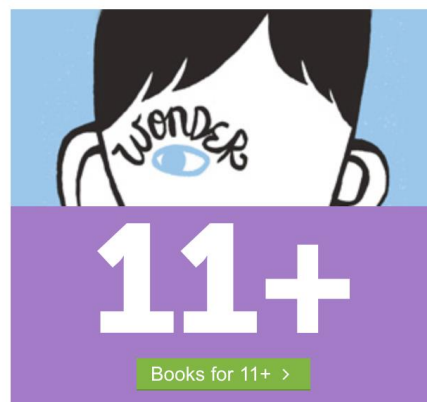
## This offer expires soon...

Bedale High School

Fitzalan Road, Bedale, North Yorkshire, DL8 2EQ ([Not your school?](#))

### BookClubs

Great news - we've got a Book Club order running until **November 30th, 2023!** Get **FREE P+P** to school and help us earn more free books by shopping now.



#### Why shop with Scholastic Book Clubs?

- ✓ Earn free books for your school.
- ✓ Enjoy free delivery to your school.
- ✓ Discover great new books from only £1.99.




**WELLBEING IN MIND TEAM**

**PARENT/ CARER SESSION ON MANAGING EXAM STRESS.**

**ALSO SUITABLE FOR STUDENTS**



THE WELLBEING IN MIND TEAM WORK IN SCHOOLS TO SUPPORT STUDENTS TO IMPROVE THEIR MENTAL HEALTH & WELLBEING

 @wellbeinginmind.mhst

**Wednesday 22nd November 2023  
6pm until 7pm via MS Teams.**

**What is Stress and what does it look like?  
What contributes to Stress?  
How can we prepare for exams?  
How can we cope with exams?**

If you have any questions and to confirm whether you will be attending the online session then please contact Sam Holmes on [teww.wimthamandrich@nhs.net](mailto:teww.wimthamandrich@nhs.net)


Interested in becoming one of our Midday Supervisors? Email [admin@bedalehighschool.org.uk](mailto:admin@bedalehighschool.org.uk) and join our friendly team of paid lunchtime duty staff

BEDALE HIGH SCHOOL PERFORMING ARTS IS PROUD TO PRESENT

**A  
CHRISTMAS  
CAROL**

BY CHARLES DICKENS, ADAPTED BY MARK GATISS

**THURSDAY 7TH,  
FRIDAY 8TH DECEMBER 2023  
1900  
IN THE MAIN HALL**

TICKETS AVAILABLE VIA EVENTBRITE THIS OCTOBER

'AN AMATEUR PRODUCTION BY ARRANGEMENT WITH NICK HERN BOOKS'



 **JOIN OUR PTFA**

We are looking for parents and friends to join our PTFA and volunteer their time at various school and community events throughout the year

Can you offer your time, support, resources, muscle or good humour?

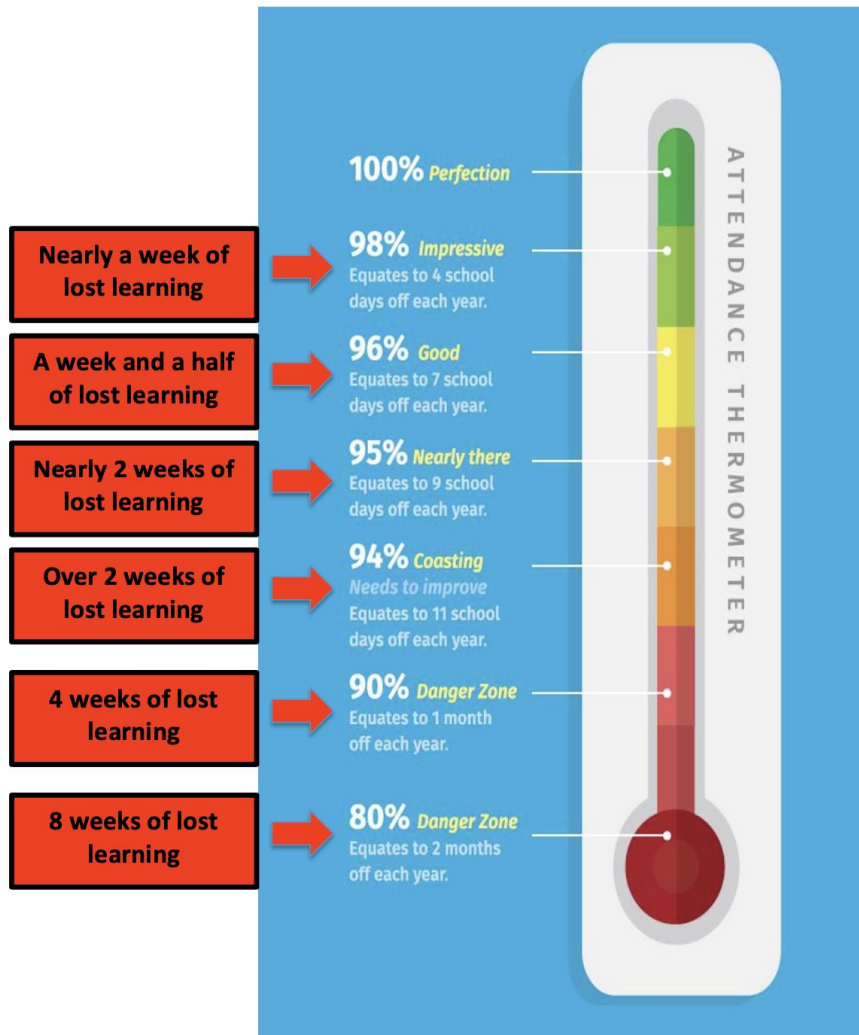
To find out more about what's coming up, email [woodl@bedalehighschool.org.uk](mailto:woodl@bedalehighschool.org.uk) to express your interest

It's not all about serving tea and coffee!




# Attendance Makes a Positive Difference To All Aspects of School Life

## ATTENDANCE THERMOMETER SHOWING THE IMPACT OF ABSENCE ON LEARNING



If you are concerned that your child is not attending school enough, or worried that they are regularly missing days, please contact us for a friendly chat so that we can help you and them overcome any barriers to being in school. We know how difficult this situation can be for some families and have lots of helpful ideas...it starts with a conversation.

Tel. 01677 422419  
(Ask for Pastoral, Mrs Hayes, or Mrs Woodward)

Or email: [admin@bedalehighschool.org.uk](mailto:admin@bedalehighschool.org.uk) and just ask for someone to contact you.

## Uniform Issues?

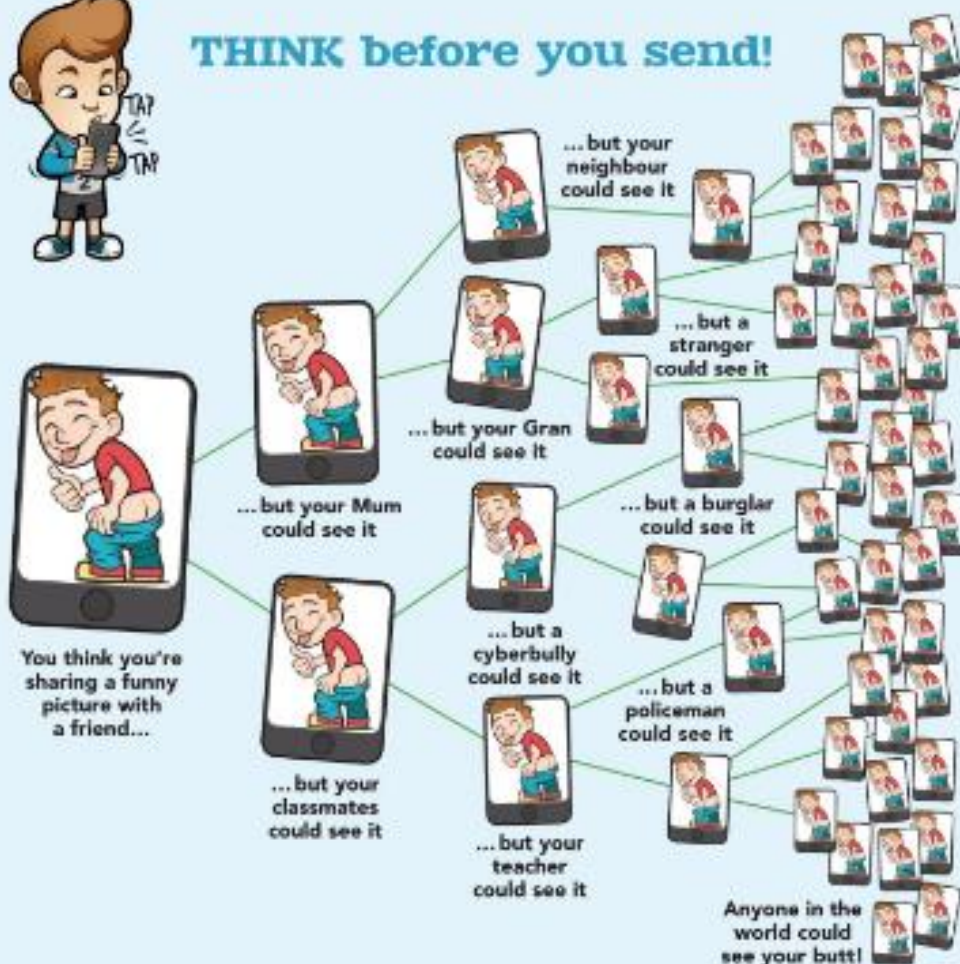
We have a good stock of spare uniform that is clean and ready to wear. Please contact the pastoral team if you are struggling to buy a replacement issue as we can sometimes offer an item through school.



### Parent Guides to Online Safety



**THINK before you send!**



scan the QR code with your phone's camera for Parent Guides on how to help keep your children safe online



### If you share it, you are involved

**If you have, or forward an indecent image of someone under 18, it is a criminal offence. It can affect your future.**

**Online safety is when young people know who they can tell if they feel upset by something that has happened online.**

**Parents** please contact your school to enquire attending their next e-safety workshop or have any concerns.

Working with Home Office 'PREVENT', The Police and Crime Commissioner and Children's Safeguarding Partnerships to help keep children safe online.

**Skips Educational** Email: [info@skipssed.com](mailto:info@skipssed.com) Tel: +44 121 227 1941

Developed in partnership with



# What's Coming Up at BHS?

Keep an eye on the changes and updates to events as this table will be updated weekly. I hope that it gives parents and carers an idea of the fantastic range of opportunities and events that are available to BHS students. We firmly believe that the happiest students are the busiest students – the ones who take advantage of the experiences we can offer them...please encourage your child to get involved!

DATE	EVENT	AUDIENCE
23 <sup>rd</sup> November	Parent Evening	Year 8 Parents and Students
23 <sup>rd</sup> November	Post 16 Session	Yr 11 Targeted Students
24 <sup>th</sup> November	Christmas Fair	All welcome!
29 <sup>th</sup> - 30 <sup>th</sup> November	Follow-up Careers Interviews	Year 11 students
30 <sup>th</sup> November	Year 9 reports sent home	Year 9 parents and students
1 <sup>st</sup> December	Staff Training Day	School Closed to all students
3 <sup>rd</sup> December (Sunday)	Technical Rehearsal for School Production 09.30-15.30	Students in Production
4 <sup>th</sup> December	Technical Rehearsal 2 14.05 - 17.30	Students in Production
5 <sup>th</sup> December	Dress Rehearsal 14.05 - 17.00	Students in Production
6 <sup>th</sup> December	Matinee Performance	Primary School Audience
7 <sup>th</sup> & 8 <sup>th</sup> December	Production Performances 19.00	Public Audience



Checkout our school Facebook page for more great achievements and latest news:

<https://www.facebook.com/bedalehighschool>



THURSDAY LUNCHTIMES  
AT  
13:30 - 14:00PM  
IN THE DRAMA STUDIO

involved in more Drama?  
Luckily for you, Mr. Maddocks is holding a Drama Club for all on Thursday lunchtimes in the Drama Studio! Come along and find out what's happening and how you can get involved! All pupils from Y7 - Y11 are welcome!

**JUST 'B'**

Anxiety, grief, low mood, isolation. . .

**If you want to talk  
we're Hear to Help**

**Call (01423) 856 799**

8am - 8pm, seven days a week

Available seven days a week to all across North Yorkshire.

Calls are charged at local rates. Visit  
<https://bit.ly/localcallcharges>.

Free, confidential support line for adults, young people and children.

We can also offer support for you - or your family and friends - around plans for end of life, including matters relating to bereavement and funerals.

**JUST 'B'**

**OASIS**

**COUNSELLING AND EMOTIONAL  
SUPPORT FOR FAMILIES AND  
FRIENDS OF PEOPLE  
WHO GAMBLE.**

If someone close to you gambles, we can give you the emotional support you need.  
Free, confidential service available across North Yorkshire.

**HELPLINE**

**0300 303 4434\***

SEVEN DAYS A WEEK, 8AM-8PM

For information on our support, visit [justb.org.uk](https://justb.org.uk)

\*Calls are charged at local rates. Go to [ofcom.org.uk](https://ofcom.org.uk) for call charge guides and check with your mobile provider.



*This service is funded by*  
**GambleAware's Community  
Resilience Fund**

**GambleAware**



# **Festive Christmas Fair**

**FRIDAY 24TH NOVEMBER  
2023**

**1700 - 1900**

**AT  
BEDALE HIGH SCHOOL**

**ALL WELCOME**

**FREE ENTRY**

If you would like to run a table top  
stall at this event please email  
[pta@bedalehighschool.org.uk](mailto:pta@bedalehighschool.org.uk)



# Mental Health Signposting

*We have now been awarded the NY Healthy Schools Silver Award!*

*Please visit our updated Mental Health and Wellbeing section on the school website: [Mental Health and Wellbeing at BHS](#)*

## Wellbeing Support from Bedale High School

There are lots of places you can access help and support...



[www.thegoto.org.uk](http://www.thegoto.org.uk)

This is a website developed by the NHS North Yorkshire Clinical Commissioning Group. It is a single point of information that promotes different mental health support services (like a signpost). The website is designed primarily for young people but there is information for parents and carers too.

### Contact details:

Mr T Kelly

[kellyt@bedalehighschool.org.uk](mailto:kellyt@bedalehighschool.org.uk)

Mrs V Clayden

[claydenv@bedalehighschool.org.uk](mailto:claydenv@bedalehighschool.org.uk)



Please don't hesitate in contacting Mr Kelly or Mrs Clayden if you have any concerns during the break or if you need support with something.



Text 07520 631168 to start a supportive text conversation with friendly professional support

### Another useful resource:

[Bedalehighschool.org.uk](http://Bedalehighschool.org.uk)  
↓  
Safeguarding  
↓  
Where to go to for help

## Further Information

In our area, there are a range of national and locally-funded support forums for children and young people which are now embedded, including:

<https://thegoto.org.uk/> The Go-To Website - the home of wellbeing and mental health in North Yorkshire. The website helps young people find the right help and support to stay well, whatever is happening in their life.



Childline - free, confidential, anonymous 24/7 service for anyone under 19 in the UK with any issue including emotional and mental health.

YoungMinds Textline - free, 24/7 text support for young people across the UK experiencing a mental health crisis, with texts answered by trained volunteers supported by experienced clinical supervisors

Buzz Us Text Messaging Service - confidential advice, support and signposting from a wellbeing worker within one working day via text for young people aged 11-18 across North Yorkshire and York.

Self Harm help: Here you can see a link to the YoungMinds website and a guide aimed at supporting parents who have children who may be self-harming. It is a useful and user-

friendly guide which include further ideas for help:

<https://www.youngminds.org.uk/parent/parents-a-z-mental-health-guide/self-harm/>

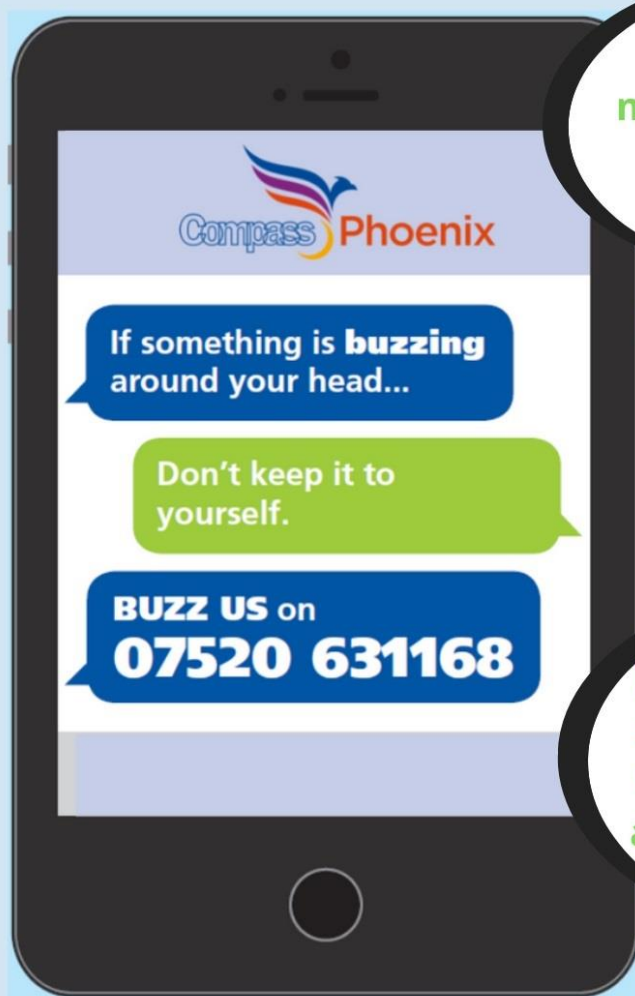
There is further information - including health professionals' referral forms - on NHS North Yorks CCG Website .

# Compass Buzz Us Service for 11-18s

## ***BUZZ US***



BUZZ US is an anonymous and confidential text-messaging service for young people aged 11-18 in North Yorkshire where you can speak to a worker of Compass Phoenix to receive advice, support and signposting for any mental health and wellbeing issues you may have.



**BUZZ US**

Thank you for messaging in, how can I help you today?

I've been feeling really low in mood for the past few months

I'm sorry to hear this, shall we work through this together and look at some strategies that may help.

